

Robonity Series

Product Lineup

LBAS Basic model

LGXS Advanced model

MOTOR-LESS SINGLE AXIS ACTUATOR

Your choice of Motor and Driver System



Motor-less

Wide selection of payload and speed requirements

Choice of ball screw leads

Wide selection stroke range

Choice of stroke range from
50 mm up to 1450 mm

(Advanced model LGXS only)

For a wide range of usage from positioning to conveyance.

Basic model LBAS

P134



High Rigidity

Compact

Low Cost

- Maximum payload 2 kg to 100 kg
- Maximum speed 133 to 1,333 mm/sec
- Stroke 50 to 1,100 mm

Advanced model LGXS

P140



High Precision Accuracy
Class C5

High Durability

Clean specification as
a standard feature

- Maximum payload 2 kg to 160 kg
- Maximum speed 300 to 2,400 mm/sec
- Stroke 50 to 1,450 mm

Model	Adaptable motor (W)	Stroke (mm)	Maximum speed (mm/sec.) ^{Note 1} (or equivalent)	Ball screw lead (mm)	Maximum payload ^{Note 2} (or equivalent)		Page	
					Horizontal	Vertical		
Basic model	LBAS04	50	50 to 800 (50 pitch)	800	12	12	2	P134
				400	6	20	5	
	LBAS05	100	50 to 800 (50 pitch)	1333	20	12	3	P136
				666	10	24	6	
				333	5	40	12	
	LBAS08	200	50 to 1100 (50 pitch)	133	2	45	15	P138
1200				20	40	8		
Advanced model	LGXS05	50	50 to 800 (50 pitch)	300	5	100	30	P140
				600	10	80	20	
				1200	20	40	8	
	LGXS05L	100	50 to 800 (50 pitch)	1333	20	12	3	P141
				666	10	24	6	
				333	5	32	12	
	LGXS07	100	50 to 1100 (50 pitch)	1800	30	10	2	P142
				1200	20	25	4	
				600	10	45	8	
	LGXS10	200	100 to 1250 (50 pitch)	300	5	85	16	P143
				1800	30	25	4	
				1200	20	40	8	
	LGXS12	400	100 to 1250 (50 pitch)	600	10	80	20	P144
				300	5	100	30	
				1800	30	35	8	
	LGXS16	750	100 to 1450 (50 pitch)	1200	20	50	15	P145
				600	10	95	25	
				300	5	115	45	
	LGXS20	750	100 to 1450 (50 pitch)	2400	40	45	12	P146
				1200	20	95	28	
				600	10	130	55	
				2400	40	65	15	P146
				1200	20	130	35	
				600	10	160	65	

Note 1. When a moving distance is short and depending on an operation condition, it may not reach the maximum speed.

Note 2. The rated thrust and maximum transferable weight are values assuming the attached motor outputs the rated torque.

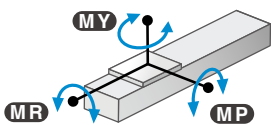
Basic model LBAS

Newly designed integrated guide rail/frame structure.
 Improved moment load capacity in compact frame size.
 Designed to accommodate motors from most leading manufacturers.

POINT 1

High Rigidity

Moment rigidity is increased approximately three times from current models.

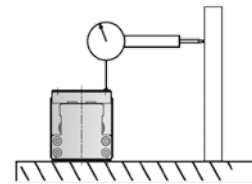


	Existing product T6L	NEW LBAS05		Existing product T9H	NEW LBAS08
MY	35	59	MY	86	221
MP	40	63	MP	133	309
MR	50	103	MR	117	343
		(N · m)			(N · m)

POINT 2

High Precision

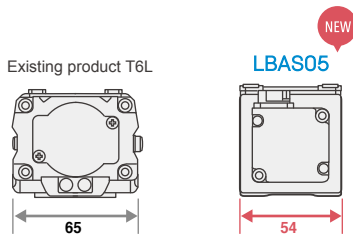
Straightness (running parallelism):
 +/-0.02/800 mm



POINT 3

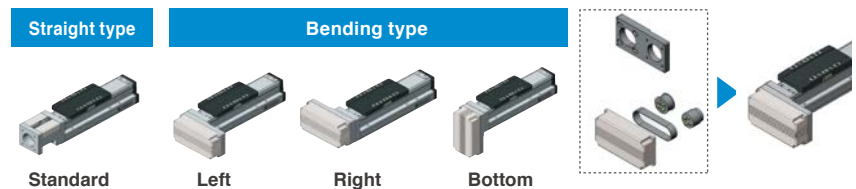
Compact

Frame width is reduced by approximately 20% from current models



POINT 4

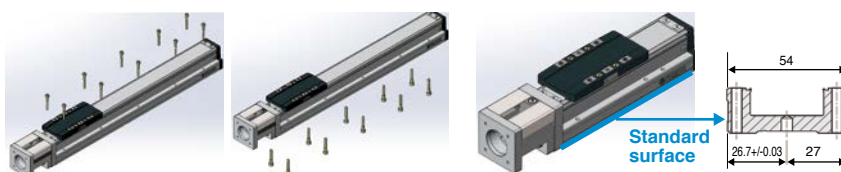
Motor attaching direction, Easily changeable with the special bending part



POINT 5

Installation process is simple and easy

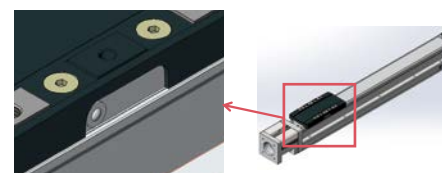
1. Mounting holes are accessible from top or bottom without disassembling actuator unit.
2. Standard surface on the side and dowel pin holes on the bottom.



POINT 6

Easy Maintenance

Moving parts can be lubricated from outside without opening actuator



Grease nipple on the slider side surface

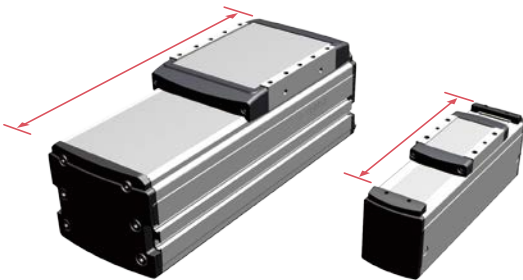
Advanced model LGXS

Higher efficiency, accuracy, and reliability from ground ball screw.
Ideal for base axis of multi-axis configuration.

POINT 1

Shortest Overall Length

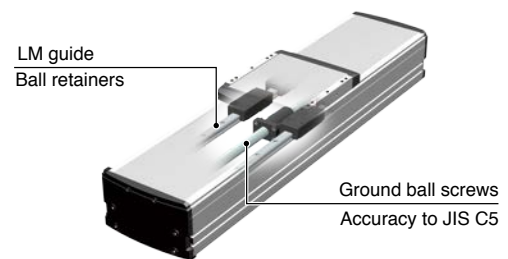
The industry's shortest class is achieved for the total length in relation to the effective stroke.



POINT 2

High Precision

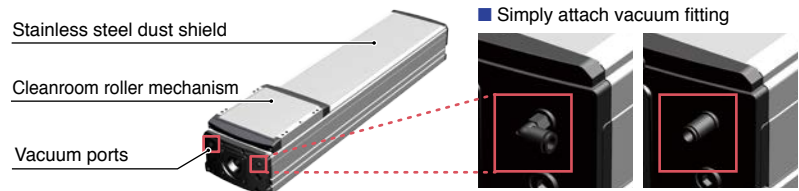
- Adopted ground ball screws
Ball screw Remove Accuracy: Accuracy class C5
- Positioning Remove Accuracy repeatability: $\pm 5 \mu\text{m}$



POINT 3

Cleanroom Ready Design

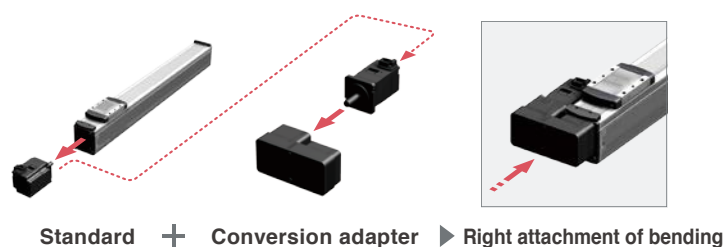
- Protective stainless dust shield
- Ports are ready for vacuum fittings

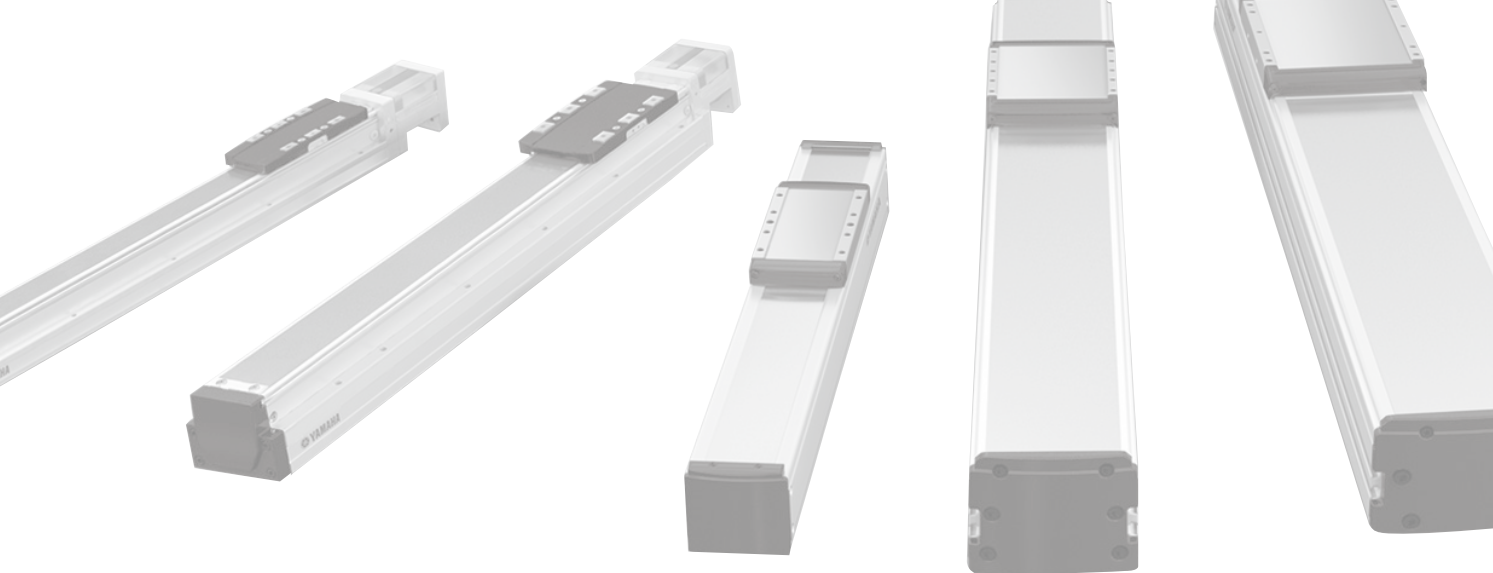


POINT 4

Motor orientation is changeable with optional conversion unit

Motor unit of standard straight type can be used for side-mount setup.





MOTOR-LESS SINGLE AXIS ACTUATOR

Robonity

SERIES

CONTENTS

Basic model

LBAS04	134
LBAS05	136
LBAS08	138

Advanced model

LGXS05	140
LGXS05L	141
LGXS07	142
LGXS10	143
LGXS12	144
LGXS16	145
LGXS20	146

Articulated robots YA
Linear conveyor modules LCM100
Motor-less single axis actuator Robonity
Compact single-axis robots TRANSEVO
Single-axis robots FLIP-X
Linear motor single-axis robots PHASER
Cartesian robots XY-X
SCARA robots YK-X
Pick & place robots YP-X
CLEAN
CONTROLLER
INFORMATION
LBAS
LGXS
Option

LBAS04

Basic model

Motor-less Single Axis Actuator

Ordering method

LBAS04

Model	Lead designation 12: 12 mm 6: 6 mm	Shape S: Straight A: Bending	Motor specification Y: Y specification (see below) P: P specification (see below)	Stroke 50 to 800 (50 mm pitch)
-------	--	------------------------------------	---	--------------------------------------

[Caution]

This system is provided as mechanical actuator unit and not including any adapters or electric components. Motor, driver and other components required for installation are user's responsibility. Refer to user's manual for installation details. Refer to your motor manual for tuning or adjustment. Vibration or resonance from actuator will affect service life of actuator. The product performance may not be satisfied depending on the compatible motor. For special parts for motor installation, install and adjust on your side.

Specifications

Adaptable motor	50 W	
Repeatability ^{Note 1}	±0.01 mm	
Deceleration mechanism	Shifting position ball screw φ 10 (C7 class)	
Stroke	50 mm to 800 mm (50 mm pitch)	
Maximum speed ^{Note 2} (or equivalent)	800 mm/sec	400 mm/sec
Ball screw lead	12 mm	6 mm
Maximum payload ^{Note 3} (or equivalent)	Horizontal	12 kg / 20 kg
	Vertical	2 kg / 5 kg
Rated thrust ^{Note 3} (or equivalent)	Horizontal	71 N / 141 N
	Vertical	71 N / 141 N
Maximum dimensions of cross section of main unit	W 44 mm × H 52 mm	
Overall length	ST + 214 mm	
Using ambient temperature and humidity	0 to 40 °C, 35 to 80 %RH (non-condensing)	

Note 1. Positioning repeatability in one direction.
 Note 2. When a moving distance is short and depending on an operation condition, it may not reach the maximum speed.
 Note 3. The rated thrust and maximum transferable weight are values assuming the attached motor outputs the rated torque.
 Note. See P.624 for acceleration/deceleration and inertia moment.

Static loading moment

	(Unit: N·m)		
	MY	MP	MR
	54	54	75

Allowable overhang ^{Note}

LBAS04-12			
Horizontal installation (Unit: mm)			
	A	B	C
2kg	1187	271	325
8kg	473	62	77
12kg	431	41	53
Wall installation (Unit: mm)			
	A	B	C
2kg	325	271	1187
8kg	77	62	473
12kg	53	41	431
Vertical installation (Unit: mm)			
	A	C	
1kg	534	534	
2kg	265	265	
LBAS04-6			
Horizontal installation (Unit: mm)			
	A	B	C
4kg	1808	155	217
12kg	801	47	65
20kg	546	25	35
Wall installation (Unit: mm)			
	A	B	C
4kg	217	155	1808
12kg	60	42	756
20kg	35	25	546
Vertical installation (Unit: mm)			
	A	C	
1kg	639	639	
3kg	208	208	
5kg	122	122	

Note. Distance from center of slider top to center of gravity of object being carried at a guide service life of 10,000 km.
 Note. Service life is calculated for 500 mm stroke models.

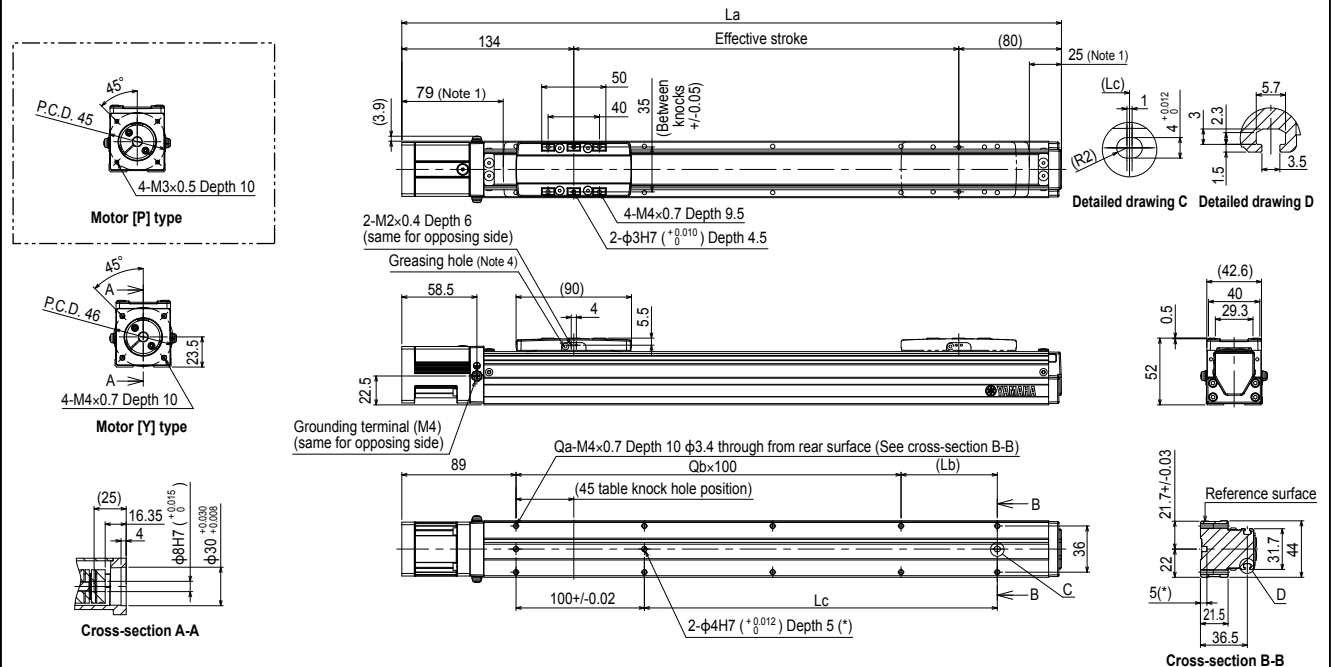
Adaptable Servo Motor

Specification	Flange size	□40
	Wattage	50 W

Note. Motor models marked with * may not be 50W, but can be installed.

Motor specification	Manufacturer	Model
Y	Yasukawa Electric Corp.	SGMJV-A5 SGM7J-A5
	Keyence Corp.	SV-□005 SV2-□005
	Mitsubishi Electric Corp.	HF-KP053 HG-KR053 HK-KT053
	Omron Electronics	R88M-K05030 R88M-1M05030
	Sanyo Denki	R2□ A04005
	Tamagawa Seiki	TSM3102
	Delta Electronics	ECMA-C1040F
	Fanuc Corp.	β IS0.2/5000
	Siemens	1FK2102-0AG 1FL6022-2AF
	Schneider	BCH2MBA53
	Beckhoff	AM3011B *
	Allen-Bradley	TLY-A120 *
P	Panasonic Corp.	MSMD5A MSMF5A

LBAS04 Straight type (S)



Effective stroke	50	100	150	200	250	300	350	400	450	500	550	600	650	700	750	800	
La	264	314	364	414	464	514	564	614	664	714	764	814	864	914	964	1014	
Lb	25	75	25	75	25	75	25	75	25	75	25	75	25	75	25	75	
Lc	25	75	125	175	225	275	325	375	425	475	525	575	625	675	725	775	
Qa	6	6	8	8	10	10	12	12	14	14	16	16	18	18	20	20	
Qb	1	1	2	2	3	3	4	4	5	5	6	6	7	7	8	8	
Weight (kg)	0.9	1.1	1.3	1.5	1.6	1.8	2	2.2	2.4	2.5	2.7	2.9	3.1	3.3	3.4	3.6	
Maximum speed (mm/sec)	Lead 12	800										720	600	480	400	360	320
	Lead 6	400										360	300	240	200	180	160
Speed setting	-										90%	75%	60%	50%	45%	40%	

Note 1. Stop positions are determined by the mechanical stoppers at both ends.
 Note 2. Please perform installation and adjustment on the special parts for motor installation by the customer. For detail, refer to the manual.
 Note 3. For the installation through hole, the length under head << 30 mm or more >> is recommended for the hex socket head bolts <M3 × 0.5>. In the installation tap hole, the length under head << thickness of stand + 10 mm or less >> is recommended for the hex socket head bolts <M4 × 0.7> used to install the main unit. Nozzle set for greasing (recommended) (see P.147 for detail)
 Note 4. Part number: KFU-M3861-00

LBAS04 Bending type (A)

Left attachment

Bottom attachment

Motor [P] type

Right attachment

Motor [Y] type

Cross-section A-A

Cross-section B-B

Effective stroke (La)

Mounting dimensions (Lb, Lc)

Motor specifications

Grounding terminal (M4) (same for opposing side)

Qa-M4×0.7 Depth 10 φ3.4 through from rear surface (See cross-section B-B)

Qb×100 (45 table knock hole position)

2-φ4H7 (+0.012) Depth 5 (*)

2-M2×0.4 Depth 6 (same for opposing side)

4-M4×0.7 Depth 9.5

2-φ3H7 (+0.010) Depth 4.5

Greasing hole (Note 4)

4-M3×0.5 Depth 10

45° P.C.D. 45

45° P.C.D. 46

Reference surface

Notes:

Note 1. Stop positions are determined by the mechanical stoppers at both ends.

Note 2. Please perform installation and adjustment on the special parts for motor installation by the customer. For detail, refer to the manual.

Note 3. For the installation through hole, the length under head << 30 mm or more >> is recommended for the hex socket head bolts <M3 × 0.5>. In the installation tap hole, the length under head << thickness of stand + 10 mm or less >> is recommended for the hex socket head bolts <M4 × 0.7> used to install the main unit.

Note 4. Nozzle set for greasing (recommended) (see P.147 for detail)

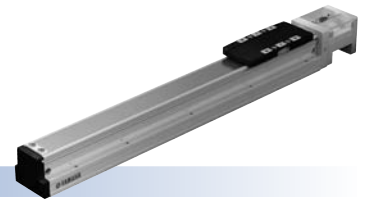
Part number: KFU-M3861-00

Effective stroke	50	100	150	200	250	300	350	400	450	500	550	600	650	700	750	800	
La	246	296	346	396	446	496	546	596	646	696	746	796	846	896	946	996	
Lb	25	75	25	75	25	75	25	75	25	75	25	75	25	75	25	75	
Lc	25	75	125	175	225	275	325	375	425	475	525	575	625	675	725	775	
Qa	6	6	8	8	10	10	12	12	14	14	16	16	18	18	20	20	
Qb	1	1	2	2	3	3	4	4	5	5	6	6	7	7	8	8	
Weight (kg)	1.1	1.2	1.4	1.6	1.8	1.9	2.1	2.3	2.5	2.7	2.8	3	3.2	3.4	3.6	3.7	
Maximum speed (mm/sec)	Lead 12										800	720	600	480	400	360	320
	Lead 6										400	360	300	240	200	180	160
Speed setting	Speed setting										-	90%	75%	60%	50%	45%	40%

LBAS05

Basic model

Motor-less Single Axis Actuator



Ordering method

LBAS05				
Model	Lead designation	Shape	Motor specification	Stroke
	20: 20 mm 10: 10 mm 5: 5 mm 2: 2 mm	S: Straight A: Bending	Y: Y specification (see below) P: P specification (see below)	50 to 800 (50 mm pitch)

[Caution]

This system is provided as mechanical actuator unit and not including any adapters or electric components. Motor, driver and other components required for installation are user's responsibility. Refer to user's manual for installation details. Refer to your motor manual for tuning or adjustment. Vibration or resonance from actuator will affect service life of actuator. The product performance may not be satisfied depending on the compatible motor. For special parts for motor installation, install and adjust on your side.

Specifications

Adaptable motor	100 W
Repeatability ^{Note 1}	+/-0.01 mm
Deceleration mechanism	Shifting position ball screw ϕ 12 (C7 class)
Stroke	50 mm to 800 mm (50 mm pitch)
Maximum speed ^{Note 2} (or equivalent)	1333 mm/sec 666 mm/sec 333 mm/sec 133 mm/sec
Ball screw lead	20 mm 10 mm 5 mm 2 mm
Maximum payload ^{Note 3} (or equivalent)	Horizontal: 12 kg 24 kg 40 kg 45 kg Vertical: 3 kg 6 kg 12 kg 15 kg
Rated thrust ^{Note 3} (or equivalent)	84 N 169 N 339 N 854 N
Maximum dimensions of cross section of main unit	W 54 mm x H 60 mm
Overall length	ST + 220.5 mm
Using ambient temperature and humidity	0 to 40 °C, 35 to 80 %RH (non-condensing)

- Note 1. Positioning repeatability in one direction.
 Note 2. When a moving distance is short and depending on an operation condition, it may not reach the maximum speed.
 Note 3. The rated thrust and maximum transferable weight are values assuming the attached motor outputs the rated torque.
 Note. See P.626 for acceleration/deceleration and inertia moment.

Static loading moment

	(Unit: N·m)		
	MY	MP	MR
	59	63	103

Allowable overhang ^{Note}

LBAS05-20	Horizontal installation (Unit: mm)			Wall installation (Unit: mm)			Vertical installation (Unit: mm)		
	A	B	C	A	B	C	A	B	C
2kg	549	324	272	272	324	549	1kg	544	544
8kg	155	73	65	65	73	155	2kg	276	276
12kg	117	46	42	42	46	117	3kg	195	195

LBAS05-10	Horizontal installation (Unit: mm)			Wall installation (Unit: mm)			Vertical installation (Unit: mm)		
	A	B	C	A	B	C	A	B	C
5kg	769	178	213	213	178	769	2kg	443	443
15kg	314	53	64	64	53	314	4kg	218	218
24kg	216	29	36	36	29	216	6kg	142	142

LBAS05-5	Horizontal installation (Unit: mm)			Wall installation (Unit: mm)			Vertical installation (Unit: mm)		
	A	B	C	A	B	C	A	B	C
10kg	921	97	131	131	97	921	3kg	345	345
25kg	459	33	45	45	33	459	8kg	124	124
40kg	436	17	23	23	17	436	12kg	79	79

LBAS05-2

Horizontal installation (Unit: mm)			Wall installation (Unit: mm)			Vertical installation (Unit: mm)			
A	B	C	A	B	C	A	B	C	
15kg	2685	78	109	109	78	2685	5kg	254	254
30kg	1833	34	47	47	34	1833	10kg	122	122
45kg	2621	19	27	27	19	2621	15kg	0	0

Note. Distance from center of slider top to center of gravity of object being carried at a guide service life of 10,000 km.
 Note. Service life is calculated for 500 mm stroke models.

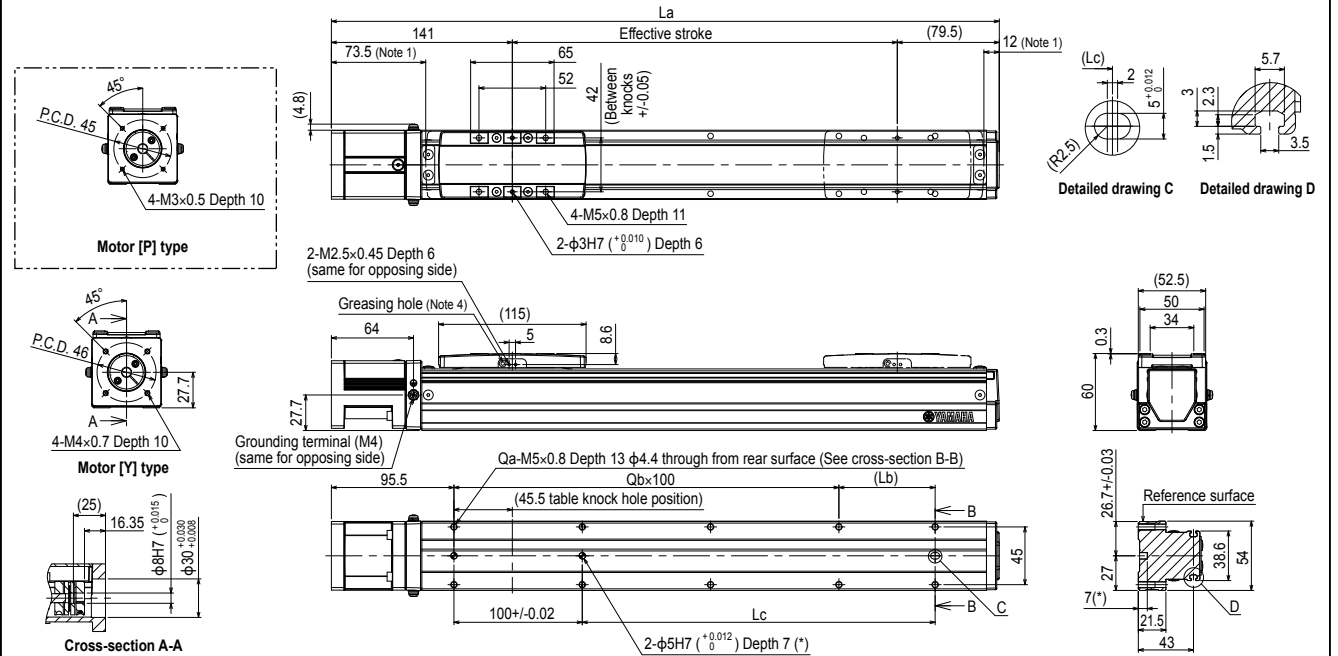
Adaptable Servo Motor

Specification	Flange size <input type="checkbox"/> 40
	Wattage 100 W

Note. Motor models marked with * may not be 100W, but can be installed.

Motor specification	Manufacturer	Model
Y	Yasukawa Electric Corp.	SGMJV-01 SGM7J-01
	Keyence Corp.	SV-□010 SV2-□010
	Mitsubishi Electric Corp.	HF-KP13 HG-KR13 HK-KT13
	Omron Electronics	R88M-K10030 R88M-1M10030
	Sanyo Denki	R2 □A04010
	Tamagawa Seiki	TSM3104
	Delta Electronics	ECMA-C10401
	Fanuc Corp.	β IS0.3/5000 KSM A01LG
	Kingserve	KSM A01L □S KSM A01LG
	Siemens	1FK2102-1AG 1FL6024-2AF
P	Schneider	BCH2MB013
	Beckhoff	AM3012C *
	Allen-Bradley	TLY-A130 *
	Panasonic Corp.	MSMD01 MSMF01

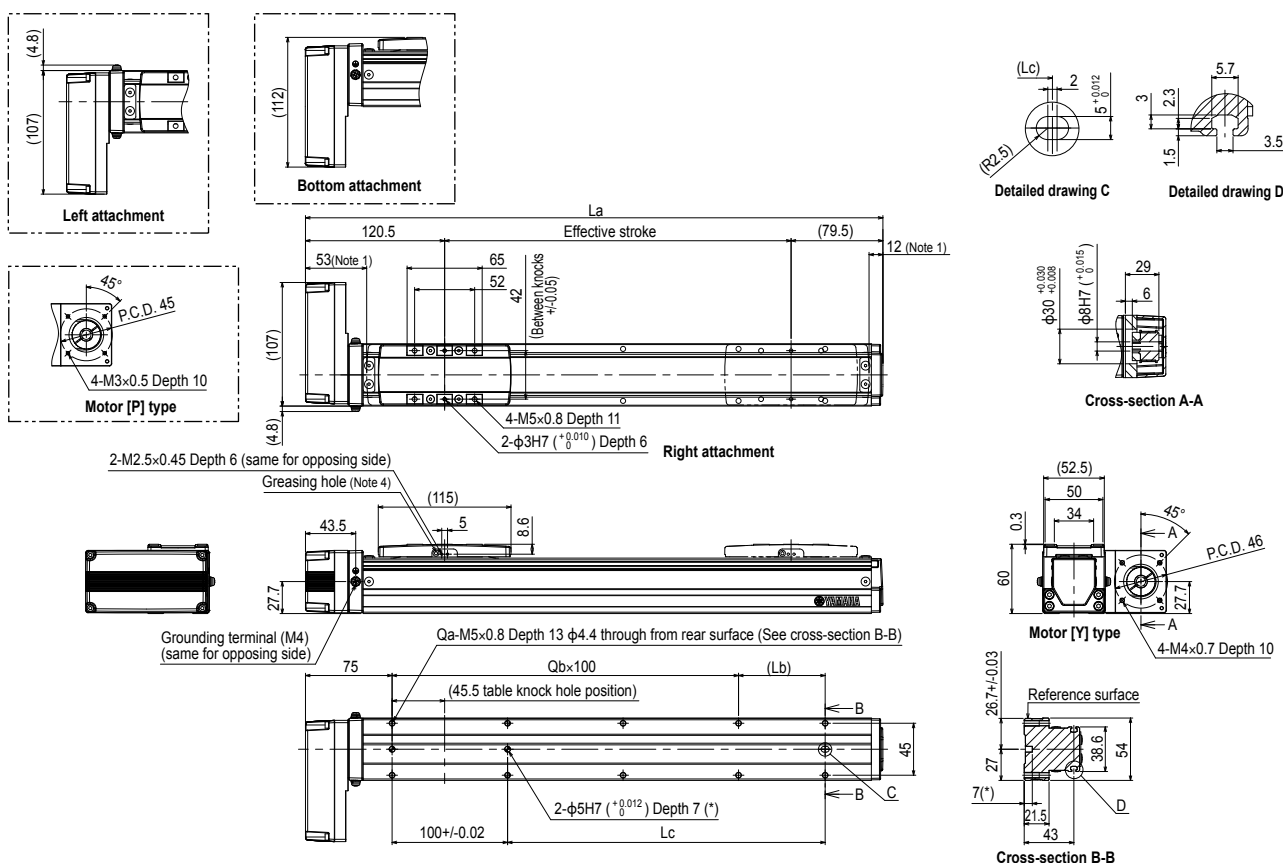
LBAS05 Straight type (S)



Effective stroke	50	100	150	200	250	300	350	400	450	500	550	600	650	700	750	800
La	270.5	320.5	370.5	420.5	470.5	520.5	570.5	620.5	670.5	720.5	770.5	820.5	870.5	920.5	970.5	1020.5
Lb	25	75	25	75	25	75	25	75	25	75	25	75	25	75	25	75
Lc	25	75	125	175	225	275	325	375	425	475	525	575	625	675	725	775
Qa	6	6	8	8	10	10	12	12	14	14	16	16	18	18	20	20
Qb	1	1	2	2	3	3	4	4	5	5	6	6	7	7	8	8
Weight (kg)	1.6	1.8	1.9	2.1	2.4	2.5	2.5	2.7	2.8	2.9	3.1	3.3	3.4	3.6	3.7	4.1
Maximum speed (mm/sec)	Lead 20	1333										1133	933	799	666	599
	Lead 10	666										566	466	399	333	299
	Lead 5	333										283	233	199	166	149
	Lead 2	133										113	93	79	66	59
Speed setting	-										85%	70%	60%	50%	45%	

- Note 1. Stop positions are determined by the mechanical stoppers at both ends.
 Note 2. Please perform installation and adjustment on the special parts for motor installation by the customer. For detail, refer to the manual.
 Note 3. For the installation through hole, the length under head << 30 mm or more >> is recommended for the hex socket head bolts <M4 x 0.7>. In the installation tap hole, the length under head << thickness of stand +10 mm or less >> is recommended for the hex socket head bolts <M5 x 0.8> used to install the main unit.
 Note 4. Nozzle set for greasing (recommended) (see P.147 for detail)
 Part number: KFU-M3861-00

LBAS05 Bending type (A)



Effective stroke	50	100	150	200	250	300	350	400	450	500	550	600	650	700	750	800
La	250	300	350	400	450	500	550	600	650	700	750	800	850	900	950	1000
Lb	25	75	25	75	25	75	25	75	25	75	25	75	25	75	25	75
Lc	25	75	125	175	225	275	325	375	425	475	525	575	625	675	725	775
Qa	6	6	8	8	10	10	12	12	14	14	16	16	18	18	20	20
Qb	1	1	2	2	3	3	4	4	5	5	6	6	7	7	8	8
Weight (kg)	1.7	1.8	2	2.2	2.4	2.6	2.6	2.8	2.9	3	3.2	3.3	3.5	3.6	3.8	4.1
Maximum speed (mm/sec)	Lead 20	1333														
	Lead 10	666														
	Lead 5	333														
	Lead 2	133														
Speed setting	-											85%	70%	60%	50%	45%

Note 1. Stop positions are determined by the mechanical stoppers at both ends.
 Note 2. Please perform installation and adjustment on the special parts for motor installation by the customer. For detail, refer to the manual.
 Note 3. For the installation through hole, the length under head << 30 mm or more>> is recommended for the hex socket head bolts <M4 × 0.7>. In the installation tap hole, the length under head << thickness of stand + 10 mm or less>> is recommended for the hex socket head bolts <M5 × 0.8> used to install the main unit.
 Note 4. Nozzle set for greasing (recommended) (see P.147 for detail)
 Part number: KFU-M3861-00

LBAS08

Basic model



Motor-less Single Axis Actuator

Ordering method

LBAS08

Model	Lead designation 20: 20 mm 10: 10 mm 5: 5 mm	Shape S: Straight A: Bending	Motor specification Y: Y specification (see below) P: P specification (see below) K: K specification (see below)	Stroke 50 to 1100 (50 mm pitch)
-------	---	------------------------------------	---	---------------------------------------

[Caution]

This system is provided as mechanical actuator unit and not including any adaptors or electric components. Motor, driver and other components required for installation are user's responsibility. Refer to user's manual for installation details. Refer to your motor manual for tuning or adjustment. Vibration or resonance from actuator will affect service life of actuator. The product performance may not be satisfied depending on the compatible motor. For special parts for motor installation, install and adjust on your side.

Specifications

Adaptable motor	200 W
Repeatability ^{Note 1}	+/-0.01 mm
Deceleration mechanism	Shifting position ball screw ϕ 16 (C7 class)
Stroke	50 mm to 1100 mm (50 mm pitch)
Maximum speed ^{Note 2} (or equivalent)	1200 mm/sec 600 mm/sec 300 mm/sec
Ball screw lead	20 mm 10 mm 5 mm
Maximum payload (or equivalent) ^{Note 3}	Horizontal 40 kg 80 kg 100 kg
	Vertical 8 kg 20 kg 30 kg
Rated thrust (or equivalent) ^{Note 3}	174 N
	341 N
	683 N
Maximum dimensions of cross section of main unit	W 82 mm x H 78 mm
Overall length	ST + 278 mm
Using ambient temperature and humidity	0 to 40 °C, 35 to 80 %RH (non-condensing)

- Note 1. Positioning repeatability in one direction.
 Note 2. When a moving distance is short and depending on an operation condition, it may not reach the maximum speed.
 Note 3. The rated thrust and maximum transferable weight are values assuming the attached motor outputs the rated torque.
 Note. See P.628 for acceleration/deceleration and inertia moment.

Static loading moment

	(Unit: N·m)		
	MY	MP	MR
	221	309	343

Allowable overhang ^{Note}

LBAS08-20

Horizontal installation (Unit: mm)				Wall installation (Unit: mm)				Vertical installation (Unit: mm)			
	A	B	C		A	B	C		A	B	C
15kg	356	131	146	15kg	146	131	356	3kg	645	645	
25kg	278	73	86	25kg	86	73	278	6kg	333	333	
40kg	255	41	53	40kg	53	41	255	8kg	252	252	

LBAS08-10

Horizontal installation (Unit: mm)				Wall installation (Unit: mm)				Vertical installation (Unit: mm)			
	A	B	C		A	B	C		A	B	C
30kg	466	83	120	30kg	120	83	466	5kg	564	564	
50kg	342	44	65	50kg	65	44	342	10kg	284	284	
80kg	228	22	34	80kg	34	22	228	20kg	142	142	

LBAS08-5

Horizontal installation (Unit: mm)				Wall installation (Unit: mm)				Vertical installation (Unit: mm)			
	A	B	C		A	B	C		A	B	C
30kg	1612	95	153	30kg	153	95	1612	10kg	325	325	
50kg	1041	52	83	50kg	83	52	1041	20kg	163	163	
80kg	719	27	44	80kg	44	27	719	30kg	109	109	
100kg	608	19	31	100kg	31	19	608				

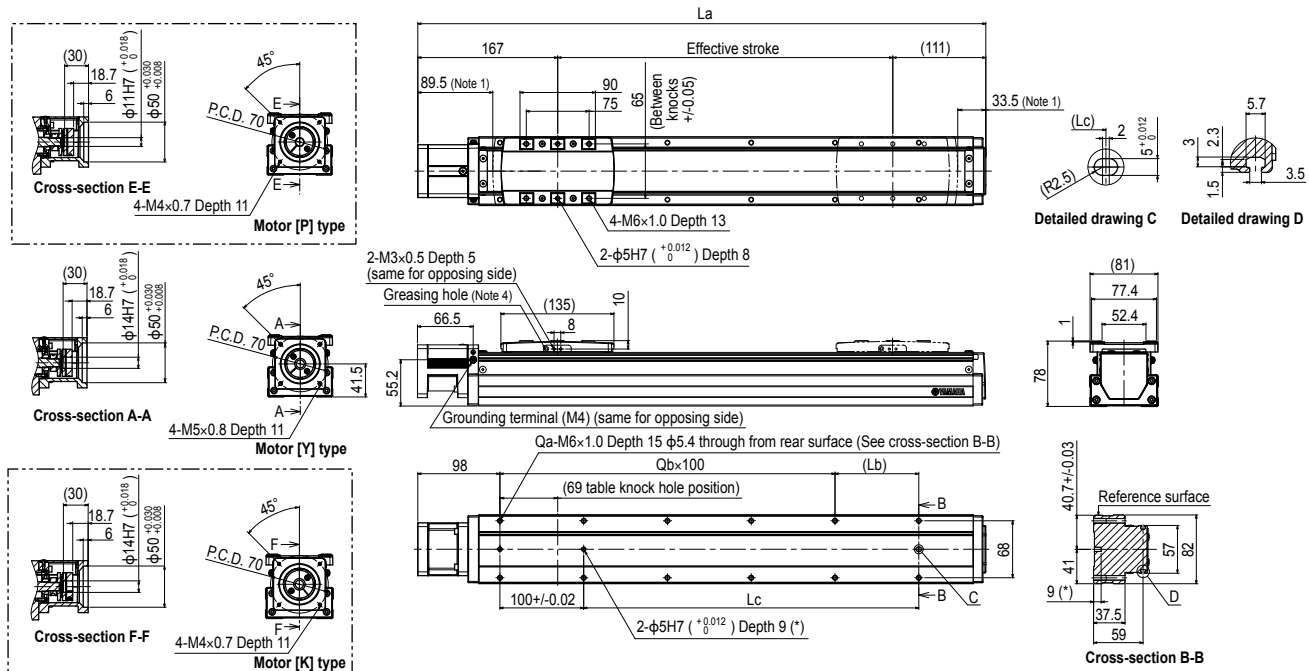
Note. Distance from center of slider top to center of gravity of object being carried at a guide service life of 10,000 km.
 Note. Service life is calculated for 600 mm stroke models.

Adaptable Servo Motor

Specification	Flange size <input type="checkbox"/> 60
	Wattage 200 W

Motor specification	Manufacturer	Model
Y	Yasukawa Electric Corp.	SGMJV-02 SGM7J-02
	Keyence Corp.	SV <input type="checkbox"/> 020 SV2 <input type="checkbox"/> 020
	Mitsubishi Electric Corp.	HF-KP23 HG-KR23 HK-KT23
	Sanyo Denki	R2 <input type="checkbox"/> A06020
	Tamagawa Seiki	TSM3202
	Delta Electronics	ECMA-C10602
	Siemens	1FL6032-2AF
	Schneider	BCH2LD023
	Omron Electronics	R88M-K20030 R88M-IM20030
	Panasonic Corp.	MSMD02 MSMF02
K	Kingservo	KSMA02LI KSMA02LG

LBAS08 Straight type (S)



Effective stroke	50	100	150	200	250	300	350	400	450	500	550	600	650	700	750	800	850	900	950	1000	1050	1100	
La	328	378	428	478	528	578	628	678	728	778	828	878	928	978	1028	1078	1128	1178	1228	1278	1328	1378	
Lb	50	100	50	100	50	100	50	100	50	100	50	100	50	100	50	100	50	100	50	100	50	100	
Lc	50	100	150	200	250	300	350	400	450	500	550	600	650	700	750	800	850	900	950	1000	1050	1100	
Qa	6	6	8	8	10	10	12	12	14	14	16	16	18	18	20	20	22	22	24	24	26	26	
Qb	1	1	2	2	3	3	4	4	5	5	6	6	7	7	8	8	9	9	10	10	11	11	
Weight (kg)	3.7	4.1	4.5	4.8	5.2	5.5	5.8	6.2	6.5	6.8	7.2	7.5	7.9	8.2	8.5	8.8	9.2	9.4	9.8	10.1	10.5	10.9	
Maximum speed (mm/sec)	Lead 20	1200																					
	Lead 10	600																					
	Lead 5	300																					
	Speed setting	-																					
Speed setting	Lead 20	1020																					
	Lead 10	510																					
	Lead 5	255																					
	Speed setting	85%																					

- Note 1. Stop positions are determined by the mechanical stoppers at both ends.
 Note 2. Please perform installation and adjustment on the special parts for motor installation by the customer. For detail, refer to the manual.
 Note 3. For the installation through hole, the length under head << 45 mm or more >> is recommended for the hex socket head bolts <M5 x 0.8>. In the installation tap hole, the length under head << thickness of stand +15 mm or less >> is recommended for the hex socket head bolts <M6 x 1.0> used to install the main unit.
 Note 4. Nozzle set for greasing (recommended) (see P.147 for detail)
 Part number: KFU-M3861-00

LBAS08 Bending type (A)

Left attachment (156)

Bottom attachment (151.5)

Motor [K] type
4-M4×0.7 Depth 12
P.C.D. 70
45°
φ50^{+0.030}/_{+0.008}
φ14H7 (±0.018)
34
5

Cross-section F-F
φ50^{+0.030}/_{+0.008}
φ14H7 (±0.018)
34
5

Detailed drawing C
R2.5
2
5
±0.012
(Lc)

Detailed drawing D
5.7
3
2.3
1.5
3.5

Cross-section E-E
45°
P.C.D. 70
φ50^{+0.030}/_{+0.008}
φ11H7 (±0.018)
34
5
4-M4×0.7 Depth 12
Motor [P] type

Effective stroke (111)
La
76 (Note 1)
90
75
66
(Between knockouts ±0.05)
33.5 (Note 1)
4-M6×1.0 Depth 13
2-φ5H7 (±0.012) Depth 8
Right attachment

2-M3×0.5 Depth 5 (same for opposing side)
Greasing hole (Note 4)
(135)
10
53
55.2
Grounding terminal (M4) (same for opposing side)

Qa-M6×1.0 Depth 15 φ5.4 through from rear surface (See cross-section B-B)
84.5
Qb×100
(69 table knockout hole position)
(Lb)
68
2-φ5H7 (±0.012) Depth 9 (*)
100±0.02
Lc

Motor [Y] type
(81)
77.4
52.4
45°
P.C.D. 80
78
1
41.5
4-M5×0.8 Depth 12

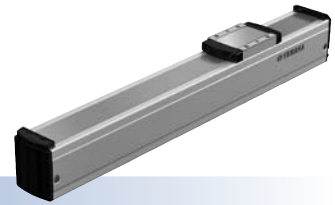
Cross-section B-B
Reference surface
40.7±0.03
41
57
82
9 (*)
37.5
59

Effective stroke	50	100	150	200	250	300	350	400	450	500	550	600	650	700	750	800	850	900	950	1000	1050	1100
La	314.5	364.5	414.5	464.5	514.5	564.5	614.5	664.5	714.5	764.5	814.5	864.5	914.5	964.5	1014.5	1064.5	1114.5	1164.5	1214.5	1264.5	1314.5	1364.5
Lb	50	100	50	100	50	100	50	100	50	100	50	100	50	100	50	100	50	100	50	100	50	100
Lc	50	100	150	200	250	300	350	400	450	500	550	600	650	700	750	800	850	900	950	1000	1050	1100
Qa	6	6	8	8	10	10	12	12	14	14	16	16	18	18	20	20	22	22	24	24	26	26
Qb	1	1	2	2	3	3	4	4	5	5	6	6	7	7	8	8	9	9	10	10	11	11
Weight (kg)	4.1	4.5	4.9	5.2	5.6	5.9	6.2	6.6	6.9	7.2	7.6	7.9	8.3	8.6	8.9	9.2	9.6	9.8	10.2	10.5	10.9	11.3
Maximum speed (mm/sec)	Lead 20											1200										
	Lead 10											600										
	Lead 5											300										
	Speed setting											-										

Note 1. Stop positions are determined by the mechanical stoppers at both ends.
Note 2. Please perform installation and adjustment on the special parts for motor installation by the customer. For detail, refer to the manual.
Note 3. For the installation through hole, the length under head << 45 mm or more >> is recommended for the hex socket head bolts <M5 × 0.8>. In the installation tap hole, the length under head << thickness of stand +15 mm or less >> is recommended for the hex socket head bolts <M6 × 1.0> used to install the main unit.
Note 4. Nozzle set for greasing (recommended) (see P.147 for detail)
 Part number: KFU-M3861-00

LGXS05

Advanced model



● Motor-less Single Axis Actuator

■ Ordering method

LGXS05	Model	Lead designation	Stroke
		20: 20 mm 10: 10 mm 5: 5 mm	50 to 800 (50 mm pitch)

[Caution]

This system is provided as mechanical actuator unit and not including any adaptors or electric components. Motor, driver and other components required for installation are user's responsibility. Refer to user's manual for installation details. Refer to your motor manual for tuning or adjustment. Vibration or resonance from actuator will affect service life of actuator. The product performance may not be satisfied depending on the compatible motor.

■ Specifications

Adaptable motor	50 W		
Repeatability ^{Note 1}	±0.005 mm		
Deceleration mechanism	Ground ball screw φ 12 (C5 class)		
Stroke	50 mm to 800 mm (50 mm pitch)		
Maximum speed ^{Note 2} (or equivalent)	1333 mm/sec	666 mm/sec	333 mm/sec
	20 mm	10 mm	5 mm
	5 kg	8 kg	13 kg
Maximum payload ^{Note 3} (or equivalent)	Horizontal	Vertical	
	2 kg	4 kg	8 kg
Rated thrust ^{Note 3} (or equivalent)	41 N	69 N	138 N
	Maximum dimensions of cross section of main unit		
	W 48 mm × H 65 mm		
Overall length	ST + 131.5 mm		
Degree of cleanliness ^{Note 4}	ISO CLASS 3 (ISO 14644-1) or equivalent		
Intake air ^{Note 5}	30 Nℓ/min to 100 Nℓ/min		
Using ambient temperature and humidity	0 to 40 °C, 35 to 80 %RH (non-condensing)		

Note 1. Positioning repeatability in one direction.

Note 2. When a moving distance is short and depending on an operation condition, it may not reach the maximum speed.

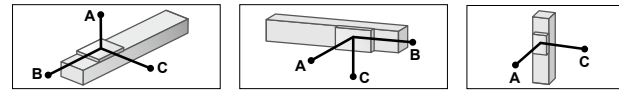
Note 3. The rated thrust and maximum transferable weight are values assuming the attached motor outputs the rated torque.

Note 4. When using in a clean environment, attach a suction air joint. The degree of cleanliness is the cleanliness level achieved when using at 1000 mm/sec or less.

Note 5. The required suction amount will vary according to the operating conditions and operating environment.

Note. See P.629 for acceleration/deceleration and inertia moment.

■ Allowable overhang ^{Note}



LGXS05-20

Horizontal installation (Unit: mm)				Wall installation (Unit: mm)				Vertical installation (Unit: mm)			
	A	B	C		A	B	C		A	C	
2kg	900	270	351	2kg	324	234	812	1kg	454	454	
5kg	583	112	159	5kg	119	76	427	2kg	218	218	

LGXS05-10

Horizontal installation (Unit: mm)				Wall installation (Unit: mm)				Vertical installation (Unit: mm)			
	A	B	C		A	B	C		A	C	
2kg	2506	382	625	2kg	585	346	2387	1kg	732	732	
5kg	1368	149	246	5kg	195	113	1165	2kg	351	351	
8kg	1038	90	150	8kg	95	54	747	4kg	160	160	

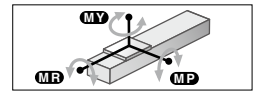
LGXS05-5

Horizontal installation (Unit: mm)				Wall installation (Unit: mm)				Vertical installation (Unit: mm)			
	A	B	C		A	B	C		A	C	
3kg	4635	281	497	3kg	439	245	4401	4kg	183	183	
8kg	2211	101	179	8kg	117	65	1826	6kg	111	111	
13kg	1599	59	105	13kg	42	24	1006	8kg	75	75	

Note. Distance from center of slider top to center of gravity of object being carried at a guide service life of 10,000 km.

Note. Service life is calculated for 600 mm stroke models.

■ Static loading moment



(Unit: N·m)		
MY	MP	MR
24	27	23

■ Adaptable Servo Motor

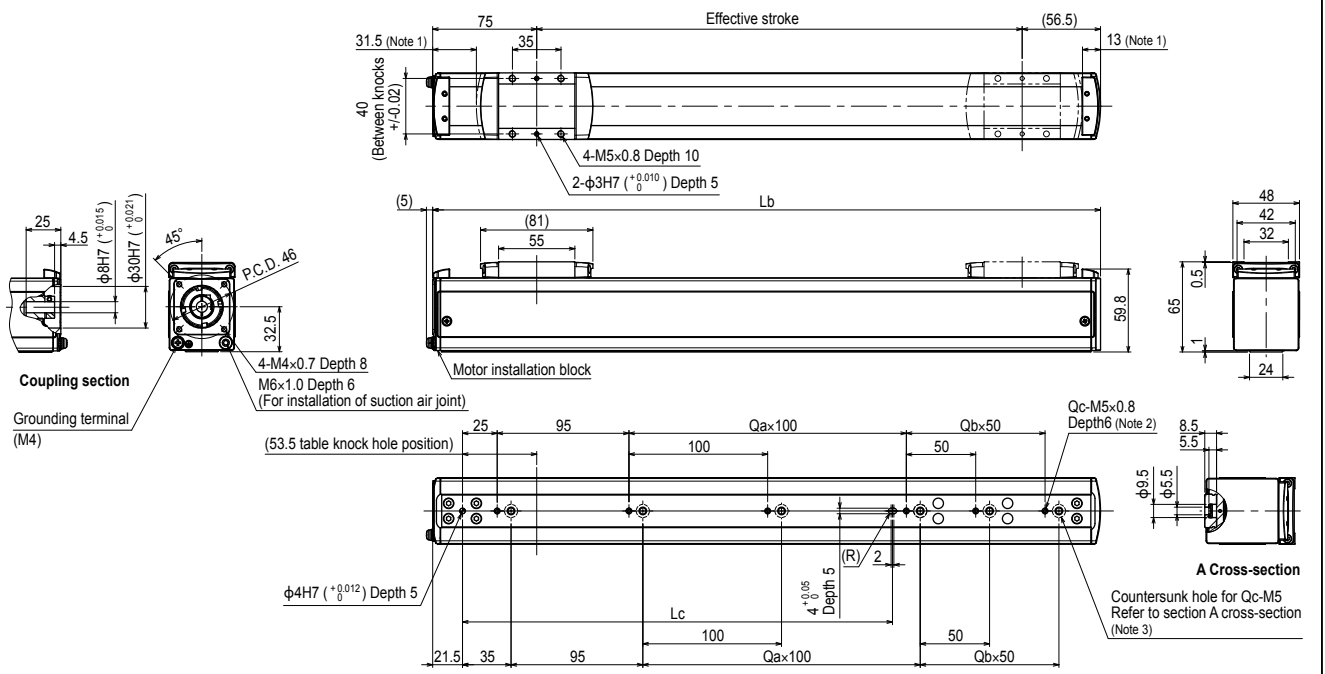
Specification	Flange size	<input type="checkbox"/> 40
	Wattage	50 W

Manufacturer	Model
Yasukawa Electric Corp.	SGMJV-A5 SGM7J-A5
Keyence Corp.	SV-□□05 SV2-□□005
	Mitsubishi Electric Corp.

Note. To combine with the conversion adaptor <GX-BEND-40>, the shim plate (t1) is necessary.

Conversion adaptor product model	Shim plate part number
GX-BEND-40	KES-M2295-00

LGXS05



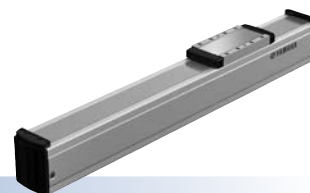
Effective stroke	50	100	150	200	250	300	350	400	450	500	550	600	650	700	750	800	
Lb	181.5	231.5	281.5	331.5	381.5	431.5	481.5	531.5	581.5	631.5	681.5	731.5	781.5	831.5	881.5	931.5	
Lc	110	110	110	110	310	310	310	310	310	310	610	610	610	610	610	610	
Qa	0	0	0	0	2	2	2	2	2	2	5	5	5	5	5	5	
Qb	0	1	2	3	0	1	2	3	4	5	0	1	2	3	4	5	
Qc	2	3	4	5	4	5	6	7	8	9	7	8	9	10	11	12	
Weight (kg)	1.2	1.4	1.5	1.7	1.9	2.0	2.2	2.3	2.5	2.6	2.8	2.9	3.1	3.2	3.4	3.5	
Maximum speed (mm/sec)	Lead 20	1333															
	Lead 10	666															
	Lead 5	333															
	Speed setting	-															

Note 1. Stop positions are determined by the mechanical stoppers at both ends.
 Note 2. When using the tap holes to mount the body, remove the set screws first.
 Note 3. When using the countersunk holes (section A cross section) to mount the body, remove the cap from the inner side and then fix. The length under head of the hex socket head bolts (M5 × 0.8) used must be 15 mm or less.

LGXS05L

Advanced model

Motor-less Single Axis Actuator



Ordering method

Model	LGXS05L
Lead designation	20: 20 mm 10: 10 mm 5: 5 mm
Stroke	50 to 800 (50 mm pitch)

[Caution]

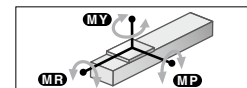
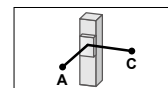
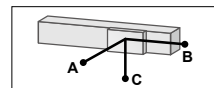
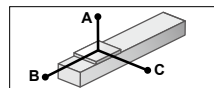
This system is provided as mechanical actuator unit and not including any adapters or electric components. Motor, driver and other components required for installation are user's responsibility. Refer to user's manual for installation details. Refer to your motor manual for tuning or adjustment. Vibration or resonance from actuator will affect service life of actuator. The product performance may not be satisfied depending on the compatible motor.

Specifications

Adaptable motor	100 W	
Repeatability ^{Note 1}	+/-0.005 mm	
Deceleration mechanism	Ground ball screw $\phi 12$ (C5 class)	
Stroke	50 mm to 800 mm (50 mm pitch)	
Maximum speed ^{Note 2} (or equivalent)	1333 mm/sec 666 mm/sec 333 mm/sec	
Ball screw lead	20 mm 10 mm 5 mm	
Maximum payload ^{Note 3} (or equivalent)	Horizontal	12 kg 24 kg 32 kg
	Vertical	3 kg 6 kg 12 kg
Rated thrust ^{Note 3} (or equivalent)	12 kg	84 N
	24 kg	169 N
	32 kg	339 N
Maximum dimensions of cross section of main unit	W 48 mm x H 65 mm	
Overall length	ST + 161.5 mm	
Degree of cleanliness ^{Note 4}	ISO CLASS 3 (ISO14644-1) or equivalent	
Intake air ^{Note 5}	30 N ℓ /min to 100 N ℓ /min	
Using ambient temperature and humidity	0 to 40 $^{\circ}$ C, 35 to 80 %RH (non-condensing)	

- Note 1. Positioning repeatability in one direction.
 - Note 2. When a moving distance is short and depending on an operation condition, it may not reach the maximum speed.
 - Note 3. The rated thrust and maximum transferable weight are values assuming the attached motor outputs the rated torque.
 - Note 4. When using in a clean environment, attach a suction air joint. The degree of cleanliness is the cleanliness level achieved when using at 1000 mm/sec or less.
 - Note 5. The required suction amount will vary according to the operating conditions and operating environment.
- Note. See P.630 for acceleration/deceleration and inertia moment.

Allowable overhang ^{Note}



LGXS05L-20

	Horizontal installation (Unit: mm)		
	A	B	C
3kg	1760	560	427
8kg	739	201	154
12kg	611	134	105

	Wall installation (Unit: mm)		
	A	B	C
3kg	397	488	1599
8kg	107	128	528
12kg	52	61	331

	Vertical installation (Unit: mm)	
	A	C
1kg	1490	1490
2kg	732	732
3kg	480	480

LGXS05L-10

	Horizontal installation (Unit: mm)		
	A	B	C
6kg	2418	388	333
12kg	1400	187	161
24kg	875	86	74

	Wall installation (Unit: mm)		
	A	B	C
6kg	277	316	2194
12kg	101	115	1086
24kg	12	14	276

	Vertical installation (Unit: mm)	
	A	C
4kg	554	554
10kg	235	235
6kg	360	360

LGXS05L-5

	Horizontal installation (Unit: mm)		
	A	B	C
10kg	3144	254	225
20kg	1850	120	106
32kg	1560	70	62

	Wall installation (Unit: mm)		
	A	B	C
10kg	162	181	2817
20kg	42	47	1282
32kg	0	0	0

	Vertical installation (Unit: mm)	
	A	C
5kg	501	501
10kg	235	235
12kg	190	190

Note. Distance from center of slider top to center of gravity of object being carried at a guide service life of 10,000 km.

Note. Service life is calculated for 600 mm stroke models.

Static loading moment

(Unit: N·m)		
MY	MP	MR
72	72	64

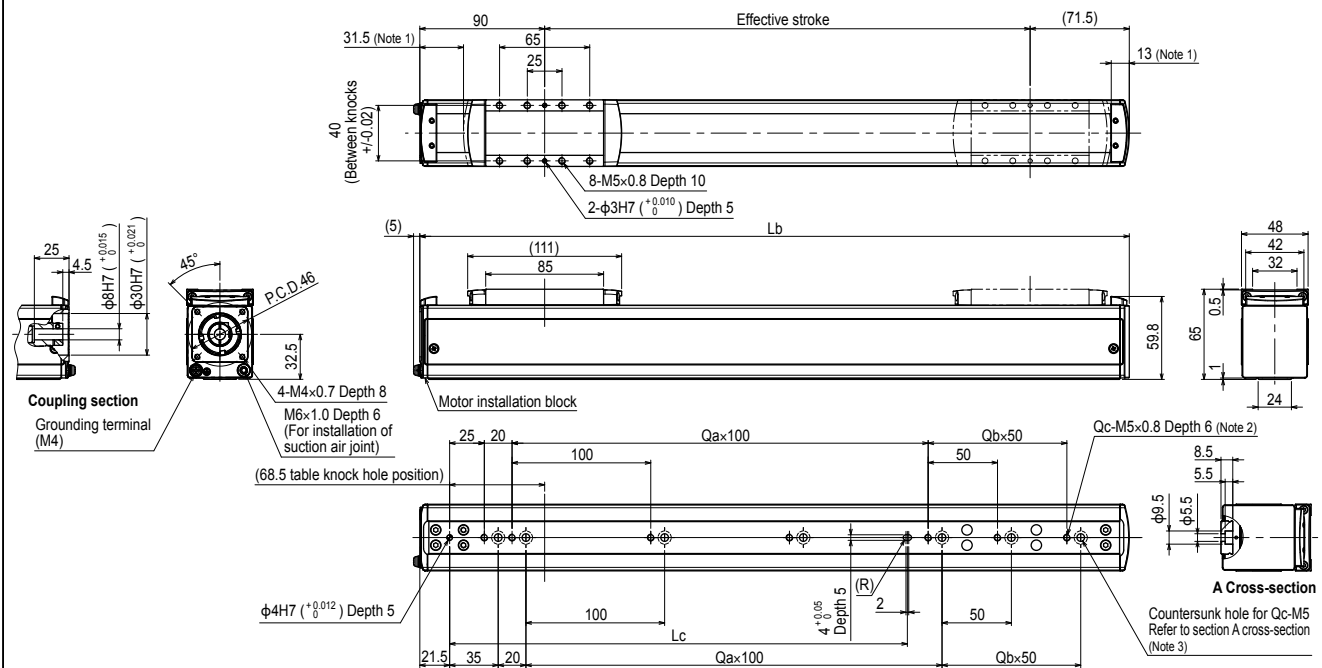
Adaptable Servo Motor

Specification	Flange size	□ 40
Manufacturer	Model	
Yasukawa Electric Corp.	SGMJV-01	
	SGM7J-01	
Keyence Corp.	SV-□ 010	
	SV2-□ 010	
Mitsubishi Electric Corp.	HF-KP13 ^{Note}	
	HG-KR13 ^{Note}	
	HK-KT13 ^{Note}	

Note. To combine with the conversion adapter <GX-BEND-40>, the shim plate (t1) is necessary.

Conversion adapter product model	Shim plate part number
GX-BEND-40	KES-M2295-00

LGXS05L

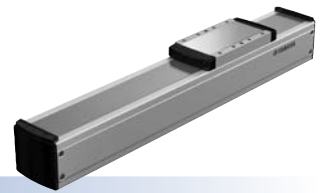


Effective stroke	Stroke (mm)																
	50	100	150	200	250	300	350	400	450	500	550	600	650	700	750	800	
Lb	211.5	261.5	311.5	361.5	411.5	461.5	511.5	561.5	611.5	661.5	711.5	761.5	811.5	861.5	911.5	961.5	
Lc	130	130	130	130	330	330	330	330	330	630	630	630	630	630	630	630	
Qa	1	1	1	1	3	3	3	3	3	6	6	6	6	6	6	6	
Qb	0	1	2	3	0	1	2	3	4	5	0	1	2	3	4	5	
Qc	3	4	5	6	5	6	7	8	9	10	8	9	10	11	12	13	
Weight (kg)	1.4	1.5	1.7	1.8	2.0	2.2	2.3	2.5	2.6	2.8	2.9	3.1	3.2	3.4	3.5	3.7	
Maximum speed (mm/sec)	Lead 20	1333									1066						
	Lead 10	666									532						
Speed setting	Lead 5	333									266						
	Speed setting	-									80%						

- Note 1. Stop positions are determined by the mechanical stoppers at both ends.
- Note 2. When using the tap holes to mount the body, remove the set screws first.
- Note 3. When using the countersunk holes (section A cross section) to mount the body, remove the cap from the inner side and then fix. The length under head of the hex socket head bolts (M5 x 0.8) used must be 15 mm or less.

LGXS07

Advanced model



Motor-less Single Axis Actuator

Ordering method

LGXS07		
Model	Lead designation	Stroke
	30: 30 mm	50 to 1100
	20: 20 mm	(50 mm pitch)
	10: 10 mm	
	5: 5 mm	

[Caution]

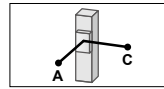
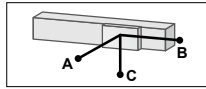
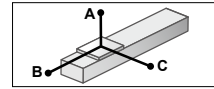
This system is provided as mechanical actuator unit and not including any adapters or electric components. Motor, driver and other components required for installation are user's responsibility. Refer to user's manual for installation details. Refer to your motor manual for tuning or adjustment. Vibration or resonance from actuator will affect service life of actuator. The product performance may not be satisfied depending on the compatible motor.

Specifications

Adaptable motor	100 W
Repeatability ^{Note 1}	+/-0.005 mm
Deceleration mechanism	Ground ball screw ϕ 15 (C5 class)
Stroke	50 mm to 1100 mm (50 mm pitch)
Maximum speed ^{Note 2} (or equivalent)	1800 mm/sec, 1200 mm/sec, 600 mm/sec, 300 mm/sec
Ball screw lead	30 mm, 20 mm, 10 mm, 5 mm
Maximum payload (or equivalent)	Horizontal: 10 kg, 25 kg, 45 kg, 85 kg; Vertical: 2 kg, 4 kg, 8 kg, 16 kg
Rated thrust (or equivalent) ^{Note 3}	56 N, 84 N, 169 N, 339 N
Maximum dimensions of cross section of main unit	W 70 mm \times H 76.5 mm
Overall length	ST + 202 mm
Degree of cleanliness ^{Note 4}	ISO CLASS 3 (ISO14644-1) or equivalent
Intake air ^{Note 5}	30 N ℓ /min to 115 N ℓ /min
Using ambient temperature and humidity	0 to 40 $^{\circ}$ C, 35 to 80 %RH (non-condensing)

- Note 1. Positioning repeatability in one direction.
 Note 2. When a moving distance is short and depending on an operation condition, it may not reach the maximum speed.
 Note 3. The rated thrust and maximum transferable weight are values assuming the attached motor outputs the rated torque.
 Note 4. When using in a clean environment, attach a suction air joint. The degree of cleanliness is the cleanliness level achieved when using at 1000 mm/sec or less.
 Note 5. The required suction amount will vary according to the operating conditions and operating environment.
 Note. See P632 for acceleration/deceleration and inertia moment.

Allowable overhang ^{Note}



LGXS07-30
Horizontal installation (Unit: mm)

	A	B	C
2kg	3084	1512	1223
6kg	1191	502	418
10kg	957	318	282

Wall installation (Unit: mm)

	A	B	C
2kg	1240	1445	2981
6kg	393	435	1063
10kg	245	251	794

Vertical installation (Unit: mm)

	A	C
1kg	2340	2340
2kg	1160	1160

LGXS07-20
Horizontal installation (Unit: mm)

	A	B	C
10kg	1331	371	358
20kg	1144	187	189
25kg	1829	169	182

Wall installation (Unit: mm)

	A	B	C
10kg	314	305	1168
20kg	132	120	812
25kg	117	103	1249

Vertical installation (Unit: mm)

	A	C
1kg	3425	3425
2kg	1705	1705
4kg	843	843

LGXS07-10
Horizontal installation (Unit: mm)

	A	B	C
15kg	2431	339	373
30kg	1536	160	177
45kg	1188	101	112

Wall installation (Unit: mm)

	A	B	C
15kg	307	273	2203
30kg	107	94	1161
45kg	39	35	629

Vertical installation (Unit: mm)

	A	C
3kg	1693	1693
6kg	830	830
8kg	614	614

LGXS07-5
Horizontal installation (Unit: mm)

	A	B	C
30kg	2918	172	197
50kg	2543	96	110
85kg	2031	49	56

Wall installation (Unit: mm)

	A	B	C
30kg	122	106	2461
50kg	34	30	1480
85kg	0	0	0

Vertical installation (Unit: mm)

	A	C
6kg	907	907
9kg	591	591
16kg	315	315

Note. Distance from center of slider top to center of gravity of object being carried at a guide service life of 10,000 km.
 Note. Service life is calculated for 600 mm stroke models.

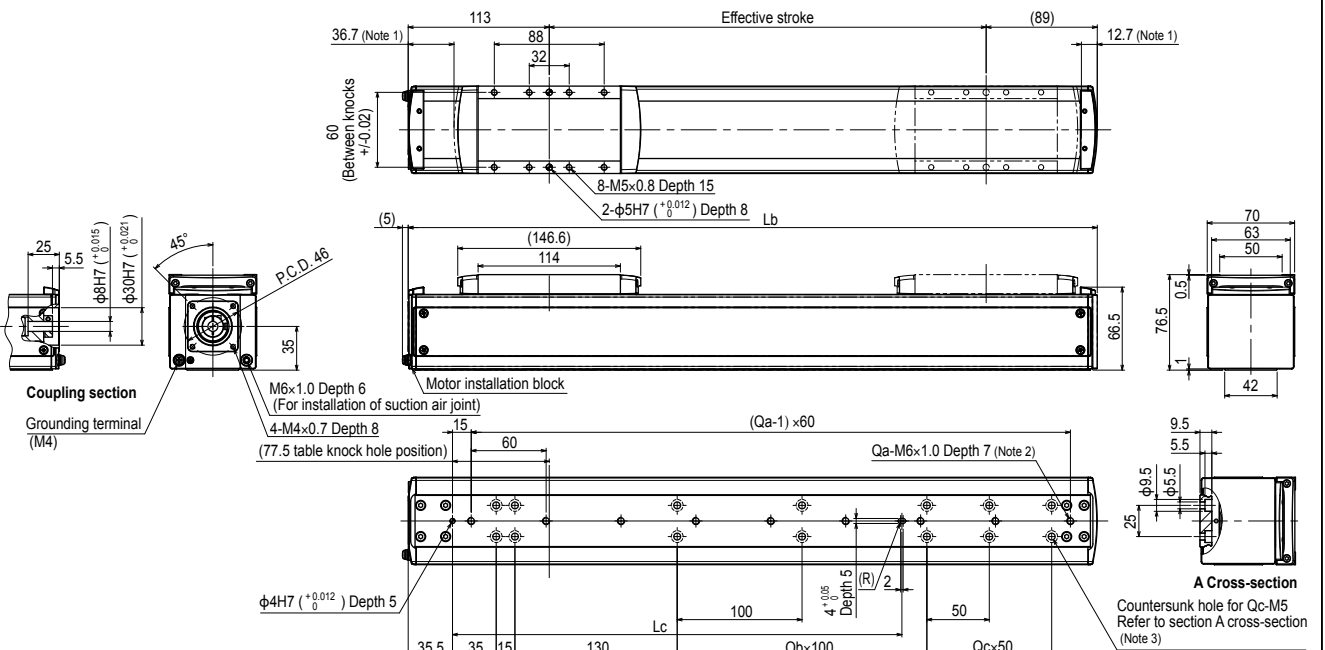
Static loading moment

	MY	MP	MR
(Unit: N-m)	138	121	121

Adaptable Servo Motor

Specification	Flange size	Wattage
	<input type="checkbox"/> 40	100 W
Manufacturer	Model	
Yasukawa Electric Corp.	SGMJV-01 SGM7J-01	
Keyence Corp.	SV- <input type="checkbox"/> 010 SV2- <input type="checkbox"/> 010	
Mitsubishi Electric Corp.	HF-KP13 ^{Note} HG-KR13 ^{Note} HK-KT13 ^{Note}	
Note. To combine with the conversion adapter <GX-BEND-40>, the shim plate (t1) is necessary.		
Conversion adapter product model	Shim plate part number	
GX-BEND-40	KES-M2295-00	

LGXS07

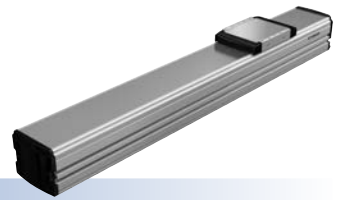


Effective stroke	50	100	150	200	250	300	350	400	450	500	550	600	650	700	750	800	850	900	950	1000	1050	1100
Lb	252	302	352	402	452	502	552	602	652	702	752	802	852	902	952	1002	1052	1102	1152	1202	1252	1302
Lc	160	160	160	160	360	360	360	360	360	360	360	360	360	360	760	760	760	760	760	760	760	760
Qa	4	5	5	6	7	8	9	10	10	11	12	13	14	15	15	16	17	18	19	20	20	21
Qb	0	0	0	0	2	2	2	2	2	2	2	2	6	6	6	6	6	6	6	6	6	6
Qc	0	1	2	3	0	1	2	3	4	5	6	7	0	1	2	3	4	5	6	7	8	9
Qd	6	8	10	12	10	12	14	16	18	20	22	24	18	20	22	24	26	28	30	32	34	36
Weight (kg)	3.2	3.4	3.7	4.0	4.3	4.5	4.8	5.1	5.3	5.6	5.9	6.2	6.4	6.7	7.0	7.2	7.5	7.8	8.1	8.3	8.6	8.9
Lead 30	1800																					
Lead 20	1200																					
Lead 10	600																					
Lead 5	300																					
Speed setting	-																					
Maximum speed (mm/sec)	1530, 1350, 1170, 990, 900, 810, 720, 630, 1020, 900, 780, 660, 600, 540, 480, 420, 510, 450, 390, 330, 300, 270, 240, 210, 255, 225, 195, 165, 150, 135, 120, 105, 85%, 75%, 65%, 55%, 50%, 45%, 40%, 35%																					

- Note 1. Stop positions are determined by the mechanical stoppers at both ends.
 Note 2. When using the tap holes to mount the body, remove the set screws first.
 Note 3. When using the countersunk holes (section A cross section) to mount the body, remove the cap from the inner side and then fix.

LGXS10

Advanced model



Motor-less Single Axis Actuator

Ordering method

LGXS10		
Model	Lead designation	Stroke
	30: 30 mm	100 to 1250
	20: 20 mm	(50 mm pitch)
	10: 10 mm	
	5: 5 mm	

[Caution]

This system is provided as mechanical actuator unit and not including any adapters or electric components. Motor, driver and other components required for installation are user's responsibility. Refer to user's manual for installation details. Refer to your motor manual for tuning or adjustment. Vibration or resonance from actuator will affect service life of actuator. The product performance may not be satisfied depending on the compatible motor.

Specifications

Adaptable motor	200 W			
Repeatability ^{Note 1}	±0.005 mm			
Deceleration mechanism	Ground ball screw φ 15 (C5 class)			
Stroke	100 mm to 1250 mm (50 mm pitch)			
Maximum speed ^{Note 2} (or equivalent)	1800 mm/sec	1200 mm/sec	600 mm/sec	300 mm/sec
Ball screw lead	30 mm	20 mm	10 mm	5 mm
Maximum payload (or equivalent) ^{Note 3}	Horizontal	25 kg	40 kg	80 kg
	Vertical	4 kg	8 kg	20 kg
Rated thrust (or equivalent) ^{Note 3}	113 N	170 N	341 N	683 N
Maximum dimensions of cross section of main unit	W 100 mm × H 99.5 mm			
Overall length	ST + 175.5 mm			
Degree of cleanliness ^{Note 4}	ISO CLASS 3 (ISO14644-1) or equivalent			
Intake air ^{Note 5}	30 Nl/min to 90 Nl/min			
Using ambient temperature and humidity	0 to 40 °C, 35 to 80 %RH (non-condensing)			

- Note 1. Positioning repeatability in one direction.
 Note 2. When a moving distance is short and depending on an operation condition, it may not reach the maximum speed.
 Note 3. The rated thrust and maximum transferable weight are values assuming the attached motor outputs the rated torque.
 Note 4. When using in a clean environment, attach a suction air joint. The degree of cleanliness is the cleanliness level achieved when using at 1000 mm/sec or less.
 Note 5. The required suction amount will vary according to the operating conditions and operating environment.
 Note. See P634 for acceleration/deceleration and inertia moment.

Allowable overhang ^{Note}

LGXS10-30		Horizontal installation (Unit: mm)		Wall installation (Unit: mm)	
	A	B	C	A	B
10kg	880	538	292	10kg	272
20kg	607	256	146	20kg	118
25kg	608	211	124	25kg	93
LGXS10-20		Horizontal installation (Unit: mm)		Wall installation (Unit: mm)	
	A	B	C	A	B
15kg	1272	452	282	15kg	253
25kg	756	254	158	25kg	124
40kg	468	142	88	40kg	51
LGXS10-10		Horizontal installation (Unit: mm)		Wall installation (Unit: mm)	
	A	B	C	A	B
30kg	1801	299	204	30kg	163
50kg	1361	163	111	50kg	69
80kg	1273	87	59	80kg	16
LGXS10-5		Horizontal installation (Unit: mm)		Wall installation (Unit: mm)	
	A	B	C	A	B
30kg	5603	321	225	30kg	181
50kg	3691	177	124	50kg	79
80kg	2614	95	67	80kg	22
100kg	2218	68	48	100kg	0

Note. Distance from center of slider top to center of gravity of object being carried at a guide service life of 10,000 km.
 Note. Service life is calculated for 600 mm stroke models.

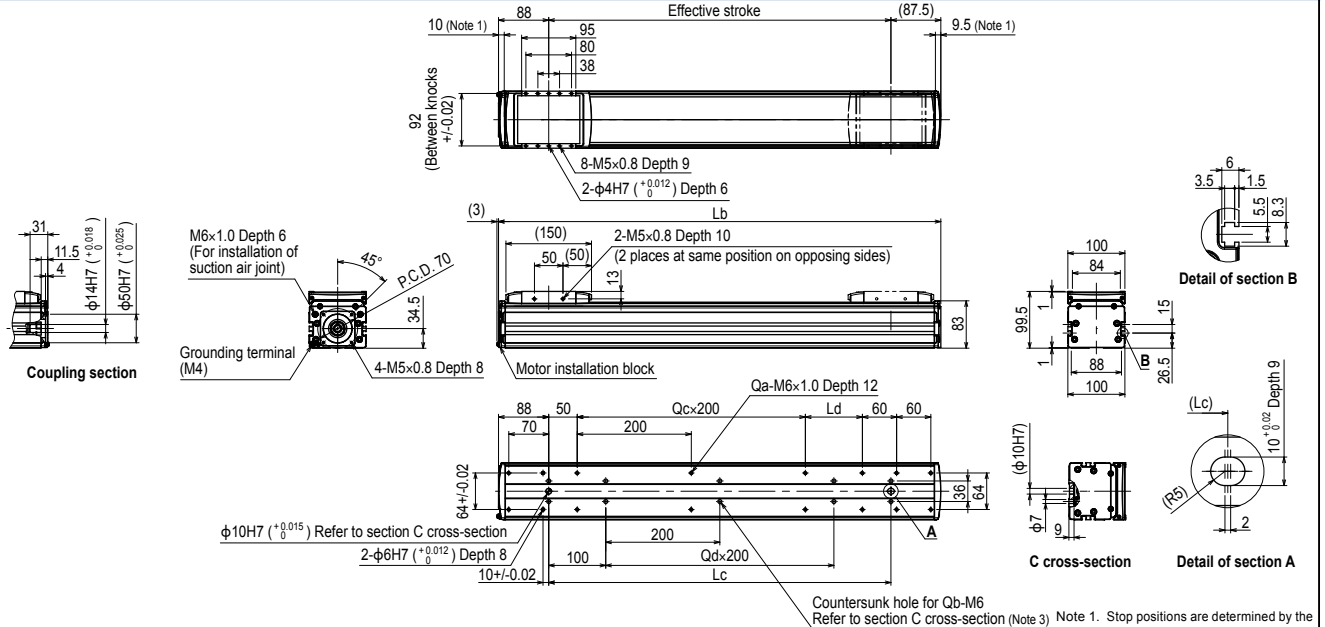
Static loading moment

(Unit: N·m)		
MY	MP	MR
274	274	241

Adaptable Servo Motor

Specification	Flange size	□60
	Wattage	200 W
Manufacturer	Model	
Yasukawa Electric Corp.	SGMJV-02	
	SGM7J-02	
Keyence Corp.	SV-□020	
	HF-KP23	
Mitsubishi Electric Corp.	HG-KR23 ^{Note}	
	HK-KT23 ^{Note}	
Note. To combine with the conversion adapter <GX-BEND-60>, the shim plate (t1) is necessary.		
Conversion adapter product model	Shim plate part number	
GX-BEND-60	KEV-M2295-00	

LGXS10

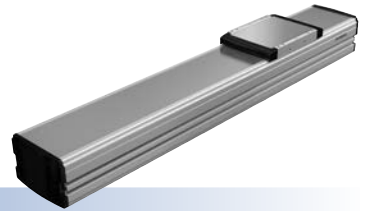


Effective stroke	100	150	200	250	300	350	400	450	500	550	600	650	700	750	800	850	900	950	1000	1050	1100	1150	1200	1250
Lb	275.5	325.5	375.5	425.5	475.5	525.5	575.5	625.5	675.5	725.5	775.5	825.5	875.5	925.5	975.5	1025.5	1075.5	1125.5	1175.5	1225.5	1275.5	1325.5	1375.5	1425.5
Lc	100	150	200	250	300	350	400	450	500	550	600	650	700	750	800	850	900	950	1000	1050	1100	1150	1200	1250
Ld	0	50	100	150	200	50	100	150	200	50	100	150	200	50	100	150	200	50	100	150	200	50	100	150
Qa	8	10	10	10	10	12	12	12	14	14	14	14	14	16	16	16	16	18	18	18	18	20	20	20
Qb	4	6	6	6	6	8	8	8	10	10	10	10	10	12	12	12	12	14	14	14	14	16	16	16
Qc	0	0	0	0	0	1	1	1	1	2	2	2	2	3	3	3	3	4	4	4	4	5	5	5
Qd	0	0	0	0	0	1	1	1	1	2	2	2	2	3	3	3	3	4	4	4	4	5	5	5
Weight (kg)	4.6	5.1	5.6	6.1	6.6	7.1	7.6	8.1	8.6	9.1	9.6	10.1	10.6	11.1	11.6	12.1	12.6	13.1	13.6	14.1	14.6	15.1	15.6	16.1
Maximum speed (mm/sec)	Lead 30	1800																						
	Lead 20	1200																						
	Lead 10	600																						
	Lead 5	300																						
Speed setting	Lead 30	-																						
	Lead 20	-																						
	Lead 10	85%																						
	Lead 5	75%																						

- Note 1. Stop positions are determined by the mechanical stoppers at both ends.
 Note 2. The length under head of the hex socket head bolts <M6 × 1.0> used to mount the body with the mounting countersunk holes (section C cross-section) must be <<20 mm or more>>. The recommended length under head of the hex socket head bolts <M6 × 1.0> used to mount the body with the mounting tap hole specifications is <<frame thickness + 10 mm or less>>.
 Note 3. When using the mounting countersunk holes (section C cross-section) to mount the body, remove the seal, and then fix.

LGXS12

Advanced model



Motor-less Single Axis Actuator

Ordering method

LGXS12		
Model	Lead designation	Stroke
	30: 30 mm	100 to 1250
	20: 20 mm	(50 mm pitch)
	10: 10 mm	
	5: 5 mm	

[Caution]

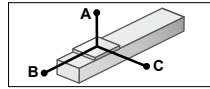
This system is provided as mechanical actuator unit and not including any adapters or electric components. Motor, driver and other components required for installation are user's responsibility. Refer to user's manual for installation details. Refer to your motor manual for tuning or adjustment. Vibration or resonance from actuator will affect service life of actuator. The product performance may not be satisfied depending on the compatible motor.

Specifications

Adaptable motor	400 W
Repeatability ^{Note 1}	+/-0.005 mm
Deceleration mechanism	Ground ball screw ϕ 15 (C5 class)
Stroke	100 mm to 1250 mm (50 mm pitch)
Maximum speed ^{Note 2} (or equivalent)	1800 mm/sec, 1200 mm/sec, 600 mm/sec, 300 mm/sec
Ball screw lead	30 mm, 20 mm, 10 mm, 5 mm
Maximum payload (or equivalent)	Horizontal: 35 kg, 50 kg, 95 kg, 115 kg Vertical: 8 kg, 15 kg, 25 kg, 45 kg
Rated thrust (or equivalent) ^{Note 3}	225 N, 339 N, 678 N, 1360 N
Maximum dimensions of cross section of main unit	W 125 mm x H 101 mm
Overall length	ST + 211.5 mm
Degree of cleanliness ^{Note 4}	ISO CLASS 3 (ISO14644-1) or equivalent
Intake air ^{Note 5}	30 NL/min to 90 NL/min
Using ambient temperature and humidity	0 to 40 °C, 35 to 80 %RH (non-condensing)

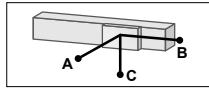
- Note 1. Positioning repeatability in one direction.
 Note 2. When a moving distance is short and depending on an operation condition, it may not reach the maximum speed.
 Note 3. The rated thrust and maximum transferable weight are values assuming the attached motor outputs the rated torque.
 Note 4. When using in a clean environment, attach a suction air joint. The degree of cleanliness is the cleanliness level achieved when using at 1000 mm/sec or less.
 Note 5. The required suction amount will vary according to the operating conditions and operating environment.
 Note. See P636 for acceleration/deceleration and inertia moment.

Allowable overhang ^{Note}



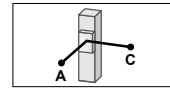
LGXS12-30
Horizontal installation (Unit: mm)

	A	B	C
10kg	1800	1076	638
20kg	1298	531	332
35kg	1343	335	228



Wall installation (Unit: mm)

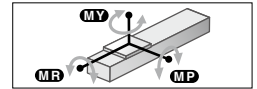
	A	B	C
10kg	632	1011	1724
20kg	315	466	1169
35kg	198	270	1133



Vertical installation (Unit: mm)

	A	C
3kg	2646	2646
6kg	1291	1291
8kg	952	952

Static loading moment



(Unit: N·m)

MY	MP	MR
334	334	294

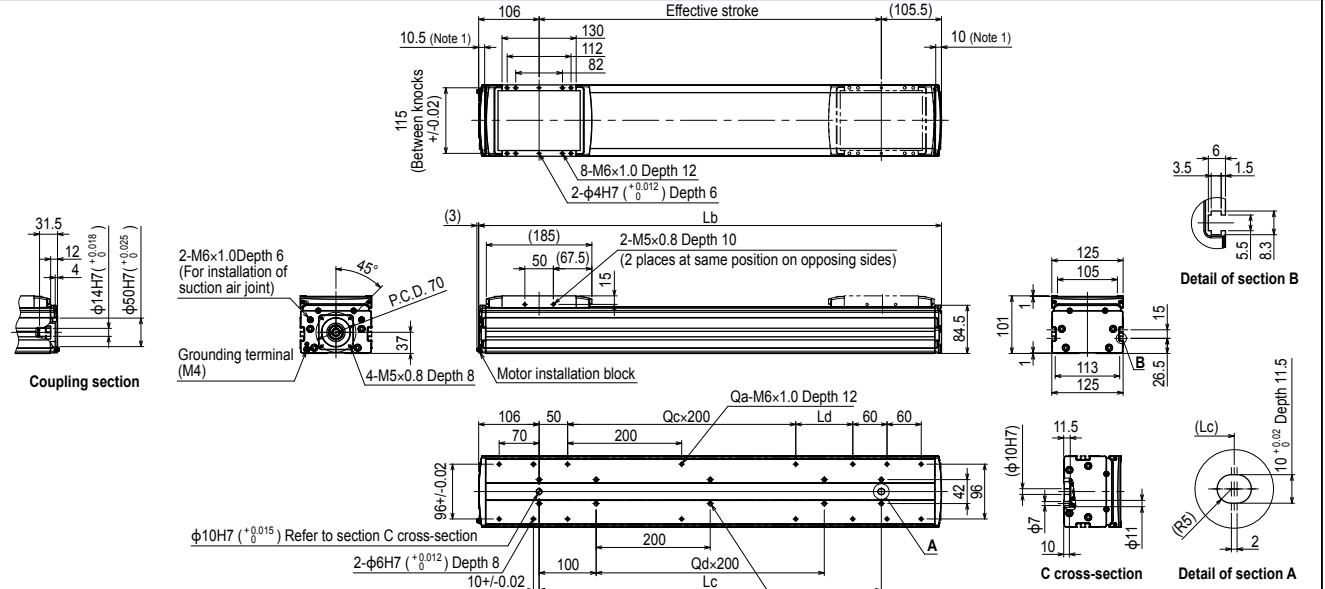
Adaptable Servo Motor

Specification	Flange size <input type="checkbox"/> 60
	Wattage 400 W
Manufacturer	Model
Yasukawa Electric Corp.	SGMJV-04 SGM7J-04
Keyence Corp.	SV- <input type="checkbox"/> 040 SV2- <input type="checkbox"/> 040
Mitsubishi Electric Corp.	HF-KP43 HG-KR43 ^{Note} HK-KT43 ^{Note}

Note. To combine with the conversion adapter <GX-BEND-60>, the shim plate (t1) is necessary.

Conversion adapter product model	Shim plate part number
GX-BEND-60	KEV-M2295-00

LGXS12

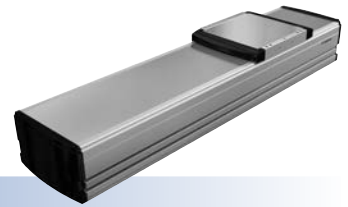


Note 1. Stop positions are determined by the mechanical stoppers at both ends.

Note 2. The length under head of the hex socket head bolts <M6 x 1.0> used to mount the body with the mounting countersunk holes (section C cross-section) must be <<20 mm or more>>. The recommended length under head of the hex socket head bolts <M6 x 1.0> used to mount the body with the mounting tap hole specifications is <<frame thickness + 10 mm or less>>.

Note 3. When using the mounting countersunk holes (section C cross-section) to mount the body, remove the seal, and then fix.

Effective stroke	100	150	200	250	300	350	400	450	500	550	600	650	700	750	800	850	900	950	1000	1050	1100	1150	1200	1250	
Lb	311.5	361.5	411.5	461.5	511.5	561.5	611.5	661.5	711.5	761.5	811.5	861.5	911.5	961.5	1011.5	1061.5	1111.5	1161.5	1211.5	1261.5	1311.5	1361.5	1411.5	1461.5	
Lc	100	150	200	250	300	350	400	450	500	550	600	650	700	750	800	850	900	950	1000	1050	1100	1150	1200	1250	
Ld	0	50	100	150	200	50	100	150	200	50	100	150	200	50	100	150	200	50	100	150	200	50	100	150	
Qa	8	10	10	10	10	12	12	12	12	14	14	14	14	16	16	16	16	18	18	18	18	20	20	20	
Qb	4	6	6	6	6	8	8	8	8	10	10	10	10	12	12	12	12	14	14	14	14	16	16	16	
Qc	0	0	0	0	0	1	1	1	1	2	2	2	2	3	3	3	3	4	4	4	4	5	5	5	
Qd	0	0	0	0	0	1	1	1	1	2	2	2	2	3	3	3	3	4	4	4	4	5	5	5	
Weight (kg)	6.5	7.1	7.8	8.5	9.1	9.8	10.5	11.2	11.8	12.5	13.2	13.9	14.5	15.2	15.9	16.5	17.2	17.9	18.6	19.2	19.9	20.6	21.3	21.9	
Maximum speed	1800																								
Lead 30																									
Lead 20																									
Lead 10																									
Lead 5																									
Speed setting																									



● Motor-less Single Axis Actuator

■ Ordering method

LGXS20		
Model	Lead designation	Stroke
40: 40 mm	100 to 1450	100 to 1450
20: 20 mm	(50 mm pitch)	
10: 10 mm		

[Caution]

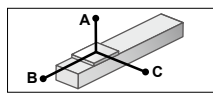
This system is provided as mechanical actuator unit and not including any adaptors or electric components. Motor, driver and other components required for installation are user's responsibility. Refer to user's manual for installation details. Refer to your motor manual for tuning or adjustment. Vibration or resonance from actuator will affect service life of actuator. The product performance may not be satisfied depending on the compatible motor.

■ Specifications

Adaptable motor	750 W		
Repeatability ^{Note 1}	±0.005 mm		
Deceleration mechanism	Ground ball screw φ20 (C5 class)		
Stroke	100 mm to 1450 mm (50 mm pitch)		
Maximum speed ^{Note 2} (or equivalent)	2400 mm/sec	1200 mm/sec	600 mm/sec
Ball screw lead	40 mm	20 mm	10 mm
Maximum payload ^{Note 3} (or equivalent)	Horizontal	65 kg	130 kg
	Vertical	15 kg	35 kg
Rated thrust ^{Note 3} (or equivalent)	320 N	640 N	1280 N
	Maximum dimensions of cross section of main unit	W 200 mm × H 140 mm	
Overall length	ST + 288.5 mm		
Degree of cleanliness ^{Note 4}	ISO CLASS 3 (ISO14644-1) or equivalent		
Intake air ^{Note 5}	30 Nℓ/min to 90 Nℓ/min		
Using ambient temperature and humidity	0 to 40 °C, 35 to 80 %RH (non-condensing)		

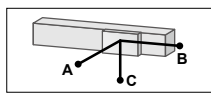
- Note 1. Positioning repeatability in one direction.
 Note 2. When a moving distance is short and depending on an operation condition, it may not reach the maximum speed.
 Note 3. The rated thrust and maximum transferable weight are values assuming the attached motor outputs the rated torque.
 Note 4. When using in a clean environment, attach a suction air joint. The degree of cleanliness is the cleanliness level achieved when using at 1000 mm/sec or less.
 Note 5. The required suction amount will vary according to the operating conditions and operating environment.
 Note. See P.640 for acceleration/deceleration and inertia moment.

■ Allowable overhang ^{Note}



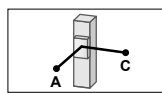
LGXS20-40
Horizontal installation (Unit: mm)

	A	B	C
20kg	5460	2838	2124
40kg	7494	1781	1626
65kg	10253	1282	1270



Wall installation (Unit: mm)

	A	B	C
20kg	2203	2768	5351
40kg	1690	1711	7259
65kg	1276	1212	9808



Vertical installation (Unit: mm)

	A	C
5kg	8187	8187
10kg	5885	5885
15kg	5971	5971

■ Static loading moment

(Unit: N-m)

MY	MP	MR
1423	1423	1251

■ Adaptable Servo Motor

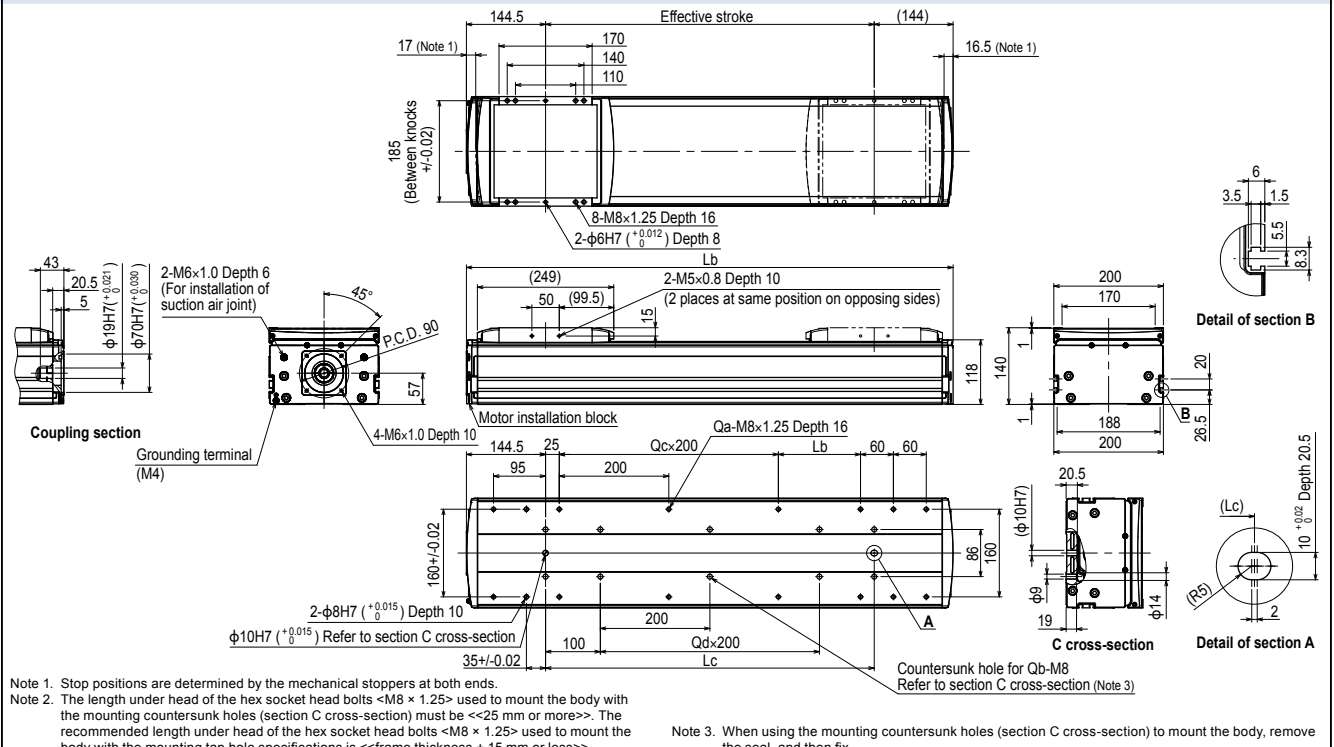
Specification	Flange size <input type="checkbox"/> 80
	Wattage 750 W

Manufacturer	Model
Yasukawa Electric Corp.	SGMJV-08 SGMJ7-08
Keyence Corp.	SV- <input type="checkbox"/> 075 SV2- <input type="checkbox"/> 075
Mitsubishi Electric Corp.	HF-KP73 HG-KR73 HK-KT7M3

Note. To combine with the conversion adapter <GX-BEND-80>, the shim plate (t1) is necessary.

Conversion adapter product model	Shim plate part number
GX-BEND-80	KEX-M2295-00

LGXS20



Note 1. Stop positions are determined by the mechanical stoppers at both ends.
 Note 2. The length under head of the hex socket head bolts <M8 × 1.25> used to mount the body with the mounting countersunk holes (section C cross-section) must be <<25 mm or more>>. The recommended length under head of the hex socket head bolts <M8 × 1.25> used to mount the body with the mounting top hole specifications is <<frame thickness + 15 mm or less>>.
 Note 3. When using the mounting countersunk holes (section C cross-section) to mount the body, remove the seal, and then fix.

Effective stroke	100	150	200	250	300	350	400	450	500	550	600	650	700	750	800	850	900	950	1000	1050	1100	1150	1200	1250	1300	1350	1400	1450					
Lb	388.5	438.5	488.5	538.5	588.5	638.5	688.5	738.5	788.5	838.5	888.5	938.5	988.5	1038.5	1088.5	1138.5	1188.5	1238.5	1288.5	1338.5	1388.5	1438.5	1488.5	1538.5	1588.5	1638.5	1688.5	1738.5					
Lc	100	150	200	250	300	350	400	450	500	550	600	650	700	750	800	850	900	950	1000	1050	1100	1150	1200	1250	1300	1350	1400	1450					
Ld	50	100	150	200	250	300	350	400	450	500	550	600	650	700	750	800	850	900	950	1000	1050	1100	1150	1200	1250	1300	1350	1400					
Qa	10	10	10	10	12	12	12	12	14	14	14	14	16	16	16	16	18	18	18	18	20	20	20	20	22	22	22	22					
Qb	4	6	6	6	6	8	8	8	8	10	10	10	10	12	12	12	12	14	14	14	14	16	16	16	16	18	18	18					
Qc	0	0	0	0	0	1	1	1	2	2	2	2	3	3	3	3	4	4	4	4	5	5	5	5	6	6	6	6					
Qd	0	0	0	0	0	1	1	1	2	2	2	2	3	3	3	3	4	4	4	4	5	5	5	5	6	6	6	6					
Weight (kg)	17.2	18.5	19.8	21.1	22.4	23.7	25.0	26.3	27.6	28.8	30.1	31.4	32.7	34.0	35.3	36.6	37.9	39.2	40.4	41.7	43.0	44.3	45.6	46.9	48.2	49.5	50.8	52.0					
Maximum speed (mm/sec)	2400																	2160	1920	1680	1440	1320	1200	1080	960	840	720	600	540	480	420	360	300
Lead 40	1200																	540	480	420	360	330	300	270	240	210	180	150					
Lead 20	600																	540	480	420	360	330	300	270	240	210	180	150					
Lead 10	-																	540	480	420	360	330	300	270	240	210	180	150					
Speed setting	-																	90%	80%	70%	60%	55%	50%	45%	40%	35%	30%	25%					

Robonity series

External Sensor Installation Guide (Left side shown)

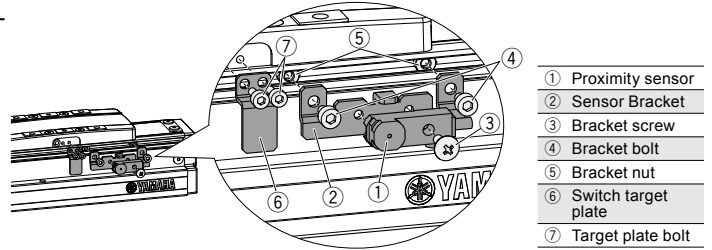
Sensor Spec

Item	Specification
Manufacturer	Panasonic Industrial Device SUNX, Co., Ltd.
Model	GX-F8B
Output method	NPN type
Output action	ON released
Power voltage	DC12 to 24V
Load current	100 mA or less
Consumption current	15 mA or less

Item	Specification
Display lamp	Orange LED (ON when output ON)
Ambient environment and humidity	-25 to +75 °C, 35 to 85 %RH
Protection structure	IP68
Cable length	5 m

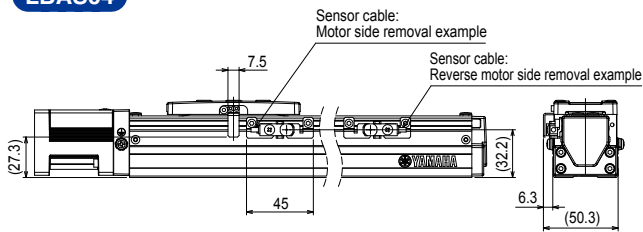
[Caution]

- Bracket screw tightening torque: 0.5 N·m
- The detection surface of the sensor and sensor plate clearance is approx. 1 mm.



- Note 1. Installation is users' responsibility
 Note 2. Mounting hardware included
 Note 3. Sensor cable is 5 m. Adjust as needed.
 Note 4. Sensor cable outlet can be either motor end or no motor end of actuator

LBAS04



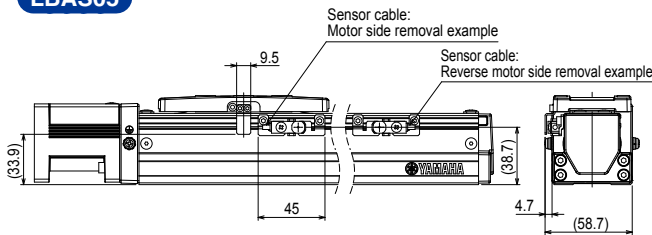
Proximity sensor option (No. KFU-M2205-00)

No.	Name	Number	Qty	Remarks
①	Proximity sensor	KP6-M4855-01	1	
②	Sensor Bracket	KFU-M22FF-00	1	
③	Bracket screw	90990-66J004	1	M3 × 0.5 Length 8
④	Bracket bolt	91312-03005	2	M3 × 0.5 Length 5
⑤	Bracket nut	95302-03700	2	M3

Target plate option (No. KFT-M2206-00)

No.	Name	Number	Qty	Remarks
⑥	Switch target plate	KFT-M22G5-00	1	
⑦	Target plate bolt	90112-02J005	2	M2 × 0.4 Length 5

LBAS05



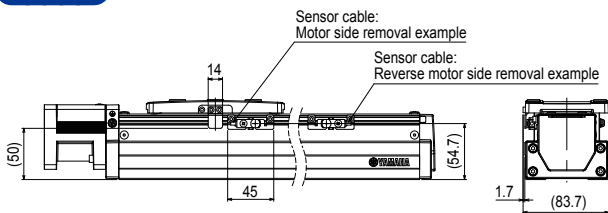
Proximity sensor option (No. KFU-M2205-00)

No.	Name	Number	Qty	Remarks
①	Proximity sensor	KP6-M4855-01	1	
②	Sensor Bracket	KFU-M22FF-00	1	
③	Bracket screw	90990-66J004	1	M3 × 0.5 Length 8
④	Bracket bolt	91312-03005	2	M3 × 0.5 Length 5
⑤	Bracket nut	95302-03700	2	M3

Target plate option (No. KFU-M2206-00)

No.	Name	Number	Qty	Remarks
⑥	Switch target plate	KFU-M22G5-00	1	
⑦	Target plate bolt	90112-2AJ005	2	M2.5 × 0.4 Length 5

LBAS08



Proximity sensor option (No. KFU-M2205-00)

No.	Name	Number	Qty	Remarks
①	Proximity sensor	KP6-M4855-01	1	
②	Sensor Bracket	KFU-M22FF-00	1	
③	Bracket screw	90990-66J004	1	M3 × 0.5 Length 8
④	Bracket bolt	91312-03005	2	M3 × 0.5 Length 5
⑤	Bracket nut	95302-03700	2	M3

Target plate option (No. KFU-M2206-00)

No.	Name	Number	Qty	Remarks
⑥	Switch target plate	KFU-M22G5-00	1	
⑦	Target plate bolt	91312-03005	2	M3 × 0.5 Length 5

Grease Gun Nozzle (LBAS Model)

Specially designed for LBAS model for lubrication on ball screw and linear guide.

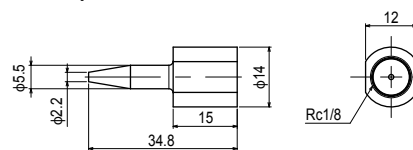
* It can be used by attaching to a commercially available general grease gun.

● Lubrication Kit

Grease nozzle and nozzle tip

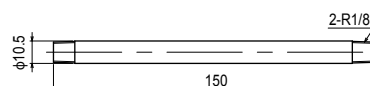
Part number KFU-M3861-00

● Nozzle tip



Part number KFU-M2941-00

● Grease nozzle



Part number KFU-M2942-00

Articulated robots
YA
 Linear conveyor modules
LCM100
 Motor-less single axis actuator
Robonity
 Compact single-axis robots
TRANSERVO
 Single-axis robots
FLIP-X
 Linear motor single-axis robots
PHASER
 Cartesian robots
XY-X
 SCARA robots
YK-X
 Pick & place robots
YP-X
 CLEAN
 CONTROLLER INFORMATION
 LBAS
 LGXS
 Option

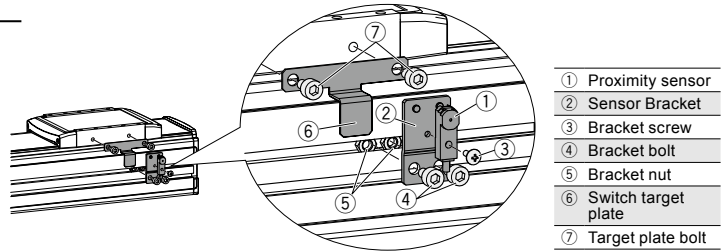
■ Sensor Spec

Item	Specification
Manufacturer	Panasonic Industrial Device SUNX, Co., Ltd.
Model	GX-F8B
Output method	NPN type
Output action	ON released
Power voltage	DC12 to 24V
Load current	100 mA or less
Consumption current	15 mA or less

Item	Specification
Display lamp	Orange LED (ON when output ON)
Ambient environment and humidity	-25 to +75 °C, 35 to 85 %RH
Protection structure	IP68
Cable length	5 m

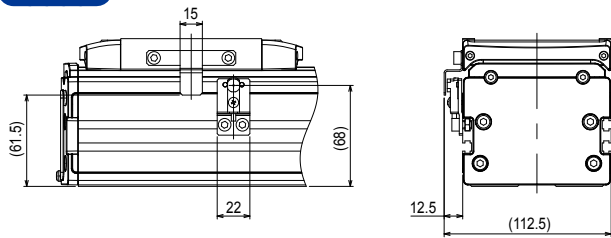
[Caution]

- Bracket screw tightening torque: 0.5 N·m
- The detection surface of the sensor and sensor plate clearance is approx. 1 mm.



Note 1. Installation is users' responsibility
 Note 2. Mounting hardware included
 Note 3. Sensor cable is 5 m. Adjust as needed.

LGXS10



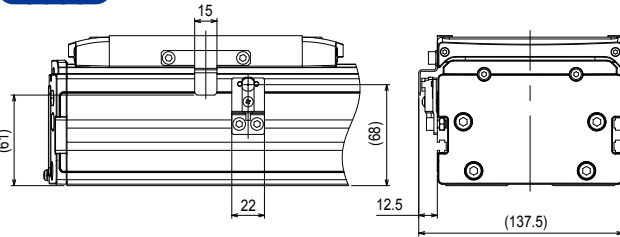
Proximity sensor option (No. KEV-M2205-00)

No.	Name	Number	Qty	Remarks
①	Proximity sensor	KP6-M4855-01	1	
②	Sensor Bracket	KEV-M22FF-00	1	
③	Bracket screw	90990-66J004	1	M3 × 0.5 Length 8
④	Bracket bolt	91312-05008	2	M5 × 0.8 Length 8
⑤	Bracket nut	95302-05700	2	M5

Target plate option (No. KEV-M2206-00)

No.	Name	Number	Qty	Remarks
⑥	Switch target plate	KEV-M22G5-00	1	
⑦	Target plate bolt	91312-05008	2	M5 × 0.8 Length 8

LGXS12



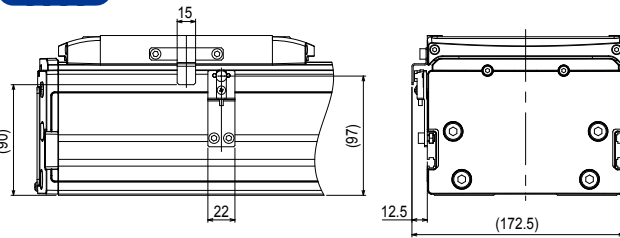
Proximity sensor option (No. KEV-M2205-00)

No.	Name	Number	Qty	Remarks
①	Proximity sensor	KP6-M4855-01	1	
②	Sensor Bracket	KEV-M22FF-00	1	
③	Bracket screw	90990-66J004	1	M3 × 0.5 Length 8
④	Bracket bolt	91312-05008	2	M5 × 0.8 Length 8
⑤	Bracket nut	95302-05700	2	M5

Target plate option (No. KEV-M2206-00)

No.	Name	Number	Qty	Remarks
⑥	Switch target plate	KEV-M22G5-00	1	
⑦	Target plate bolt	91312-05008	2	M5 × 0.8 Length 8

LGXS16



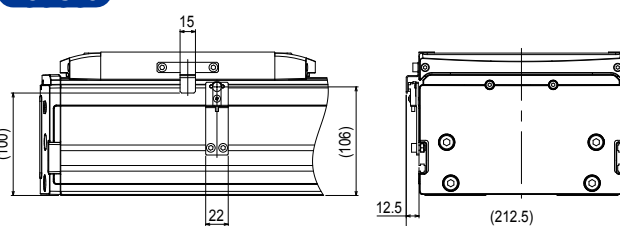
Proximity sensor option (No. KEX-M2205-00)

No.	Name	Number	Qty	Remarks
①	Proximity sensor	KP6-M4855-01	1	
②	Sensor Bracket	KEX-M22FF-00	1	
③	Bracket screw	90990-66J004	1	M3 × 0.5 Length 8
④	Bracket bolt	91312-05008	2	M5 × 0.8 Length 8
⑤	Bracket nut	95302-05700	2	M5

Target plate option (No. KEV-M2206-00)

No.	Name	Number	Qty	Remarks
⑥	Switch target plate	KEV-M22G5-00	1	
⑦	Target plate bolt	91312-05008	2	M5 × 0.8 Length 8

LGXS20



Proximity sensor option (No. KEY-M2205-00)

No.	Name	Number	Qty	Remarks
①	Proximity sensor	KP6-M4855-01	1	
②	Sensor Bracket	KEY-M22FF-00	1	
③	Bracket screw	90990-66J004	1	M3 × 0.5 Length 8
④	Bracket bolt	91312-05008	2	M5 × 0.8 Length 8
⑤	Bracket nut	95302-05700	2	M5

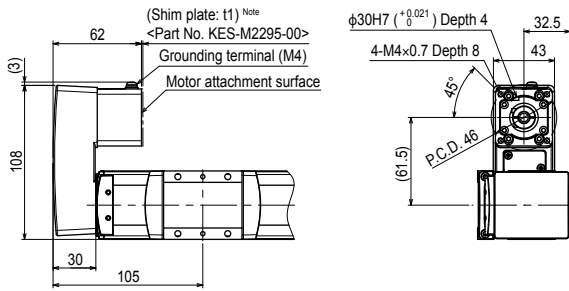
Target plate option (No. KEV-M2206-00)

No.	Name	Number	Qty	Remarks
⑥	Switch target plate	KEV-M22G5-00	1	
⑦	Target plate bolt	91312-05008	2	M5 × 0.8 Length 8

Robonity series

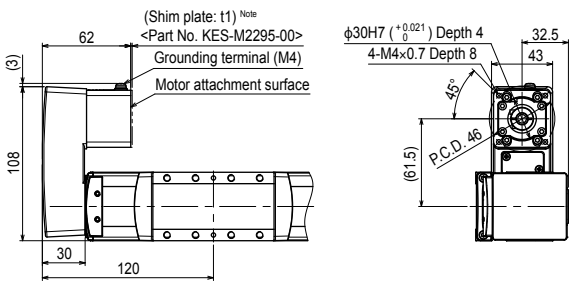
Reference guide for right angle motor mount (right side shown)

LGXS05



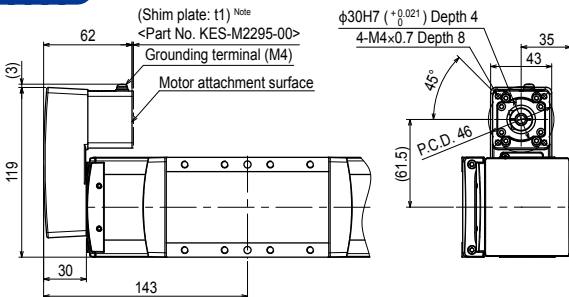
Note. For the availability of shim plate, see the adaptable servo motor table (P.140).

LGXS05L



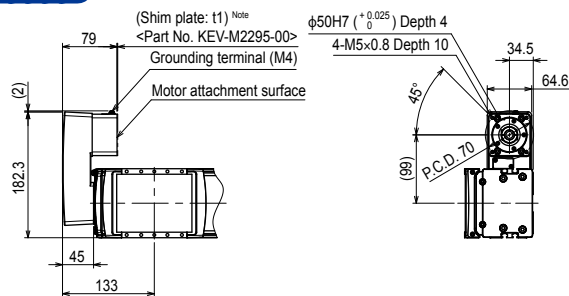
Note. For the availability of shim plate, see the adaptable servo motor table (P.141).

LGXS07



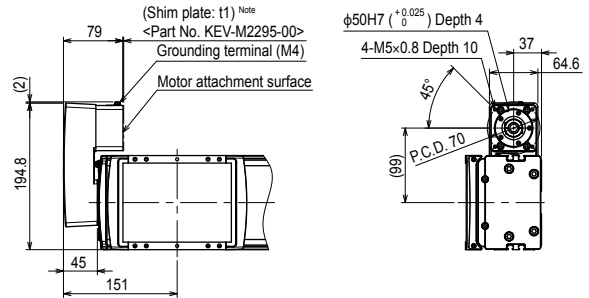
Note. For the availability of shim plate, see the adaptable servo motor table (P.142).

LGXS10



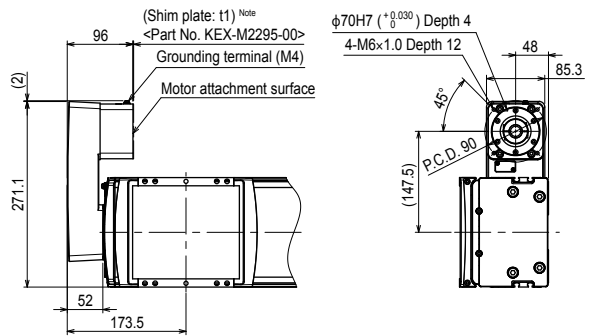
Note. For the availability of shim plate, see the adaptable servo motor table (P.143).

LGXS12



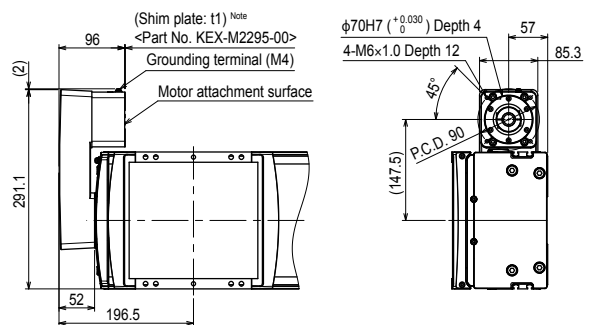
Note. For the availability of shim plate, see the adaptable servo motor table (P.144).

LGXS16



Note. For the availability of shim plate, see the adaptable servo motor table (P.145).

LGXS20



Note. For the availability of shim plate, see the adaptable servo motor table (P.146).

Note 1. Use by attaching the conversion adapter to the main unit. Refer to the manual for the attachment method.

Note 2. A motor is not included in the conversion adapter. Remove a motor from the main unit, and install the conversion adapter.

Note 3. Right installation and left installation are possible.

Model	Product model	Part No.	Weight
LGXS05, LGXS05L, LGXS07	GX-BEND-40	KES-M221M-00	0.4 kg
LGXS10, LGXS12	GX-BEND-60	KEV-M221M-00	1.2 kg
LGXS16, LGXS20	GX-BEND-80	KEX-M221M-00	2.7 kg

- Articulated robots
- YA
- Linear conveyor modules
- LCM100
- Motor-less single axis actuator
- Robonity
- Compact single-axis robots
- TRANSEURO
- Single-axis robots
- FLIP-X
- Linear motor single-axis robots
- PHASER
- Cartesian robots
- XY-X
- SCARA robots
- YK-X
- Pick & place robot
- YP-X
- CLEAN
- CONTROLLER INFORMATION
- LBAS
- LGXS
- Option